

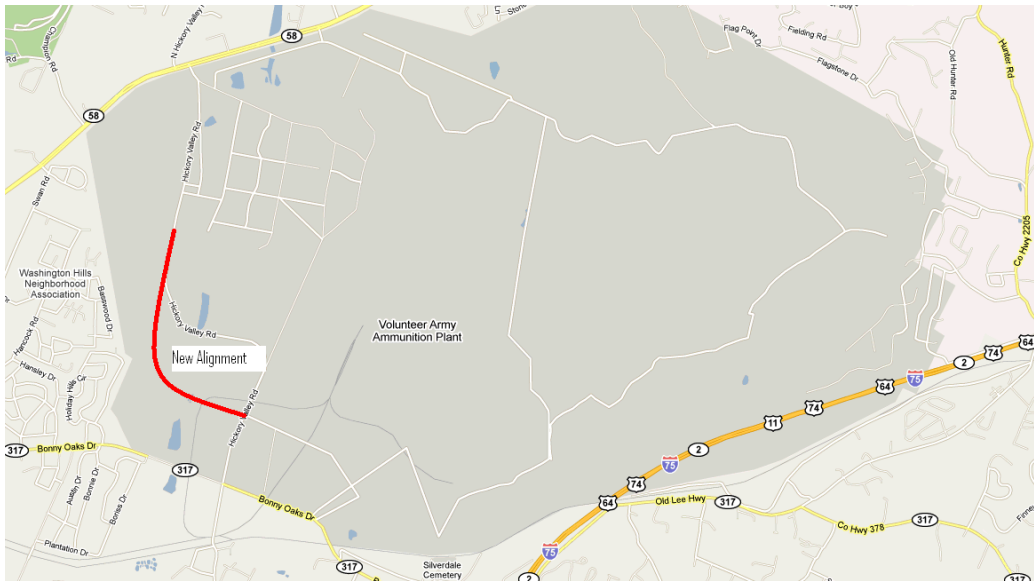
Fiscal Years 2011-2014 Transportation Improvement Program

OLD

TIP #	ENTPARKHICK58	TDOT PIN #		Improvement Type	New Alignment	Lead Agency	Chattanooga
County	Hamilton	Length	0.6 mi	L RTP#	21e	Conformity Status	Non-Exempt
Route/Project Name	Enterprise Parkway			Total Project Cost	\$7,090,769		
Termini or Intersection	Hickory Valley Rd to 1 mi South of Hwy 58						
Project Description	New alignment for a four lane roadway.						

Fiscal Year	Type of Work	Funding Type	Total Funds	Fed Funds	State Funds	Local Funds
2011	PE-N	HPP	\$122,020	\$97,616		\$24,404
2011	PE-D	HPP	\$488,080	\$390,464		\$97,616
2012	CONST	HPP	\$6,480,669	\$5,184,535		\$1,296,134

Amendment 1 #	1	Adjustment 1 #		Remarks
Amended on	4/19/2011	Adjusted on		
Amendment 2 #		Adjustment 2 #		
Amended on		Adjusted on		



This map is for illustrative purposes only. Drawings depict conceptual project corridors and areas, not approved alignments.

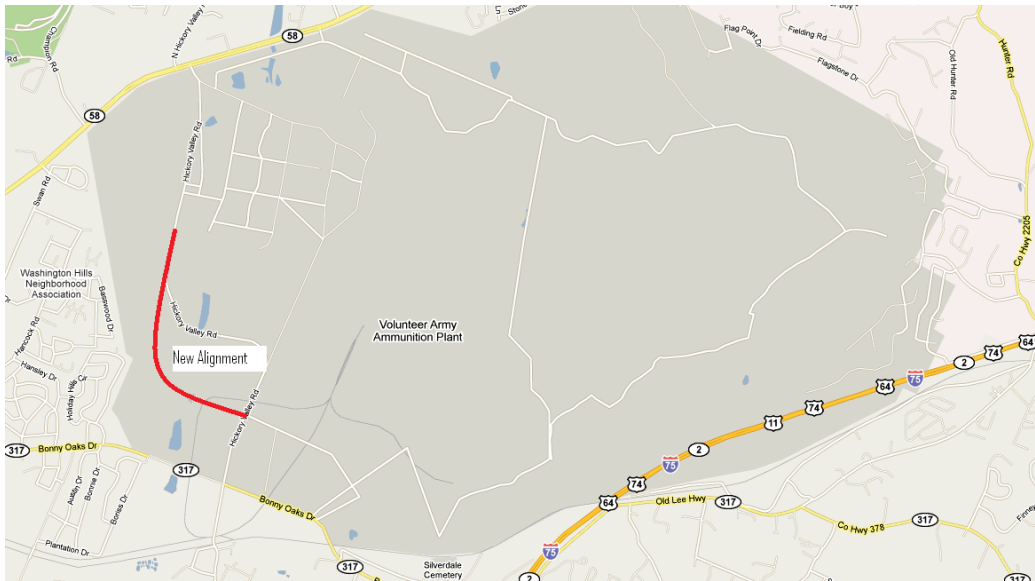
Fiscal Years 2011-2014 Transportation Improvement Program

NEW

TIP #	ENTPARKHICK58	TDOT PIN #		Improvement Type	New Alignment	Lead Agency	Chattanooga
County	Hamilton	Length	0.6 mi	L RTP#	21e	Conformity Status	Nonexempt
Route/Project Name	Enterprise Parkway			Total Project Cost	\$17,305,530		
Termini or Intersection	Hickory Valley Rd to 1 mi South of Hwy 58						
Project Description	New alignment for a four lane roadway.						

Fiscal Year	Type of Work	Funding Type	Total Funds	Fed Funds	State Funds	Local Funds
2013	PE-N	HPP	\$541,727	\$433,382		\$108,345
2013	PE-D	HPP	\$818,030	\$654,424		\$163,606
2014	CONST	HPP	\$11,098,043	\$8,878,434		\$2,219,609
2014	CONST	LOCAL	\$4,847,730			\$4,847,730

Amendment 1 #	1	Adjustment 1 #	1	Remarks New page.
Amended on	4/19/2011	Adjusted on	10/4/2012	
Amendment 2 #		Adjustment 2 #		
Amended on		Adjusted on		



This map is for illustrative purposes only. Drawings depict conceptual project corridors and areas, not approved alignments.

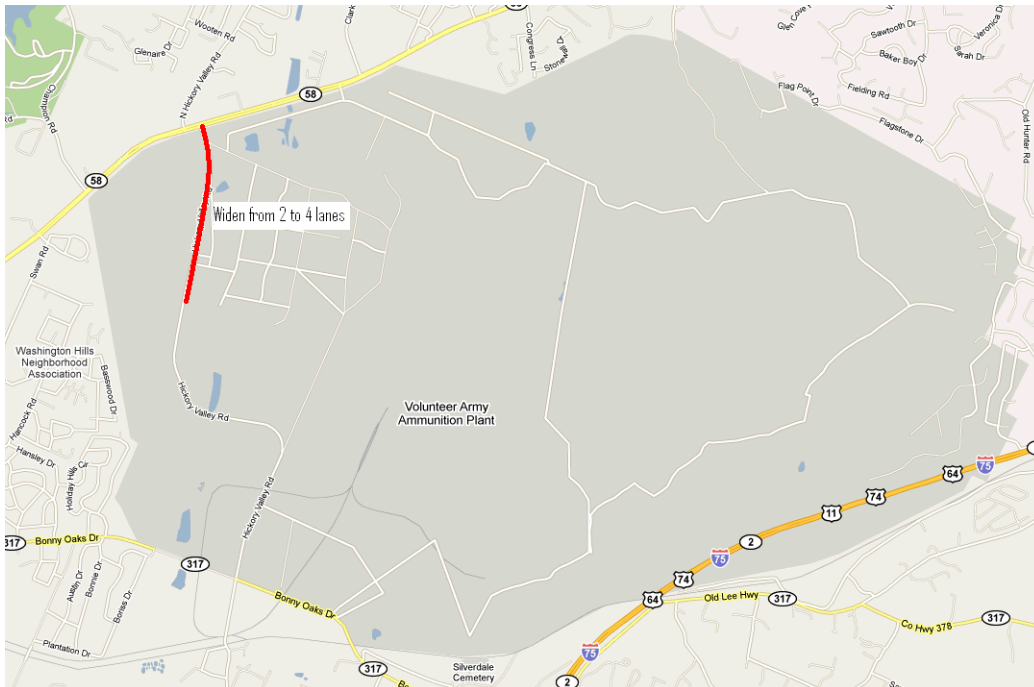
Fiscal Years 2011-2014 Transportation Improvement Program

OLD

TIP #	HICKVALLENTPARKS	TDOT PIN #	<input type="text"/>	Improvement Type	Widening	Lead Agency	Chattanooga
County	Hamilton	Length	1.1 mi	L RTP#	126	Conformity Status	Non-Exempt
Route/Project Name	Hickory Valley Rd			Total Project Cost	\$10,784,384		
Termini or Intersection	Enterprise Parkway Extension to Hwy 58						
Project Description	Widen from 2 to 4 lanes						

Fiscal Year	Type of Work	Funding Type	Total Funds	Fed Funds	State Funds	Local Funds
2011	PE-N	HPP	\$181,530	\$145,224		\$36,306
2011	PE-D	HPP	\$726,120	\$580,896		\$145,224
2012	CONST	HPP	\$9,876,734	\$7,901,387		\$1,975,347

Amendment 1	<input type="text" value="1"/>	Adjustment 1 #	<input type="text"/>	Remarks <div style="border: 1px solid black; height: 100px;"></div>
Amended on	4/19/2011	Adjusted on	<input type="text"/>	
Amendment 2	<input type="text"/>	Adjustment 2 #	<input type="text"/>	
Amended on	<input type="text"/>	Adjusted on	<input type="text"/>	



This map is for illustrative purposes only. Drawings depict conceptual project corridors and areas, not approved alignments.

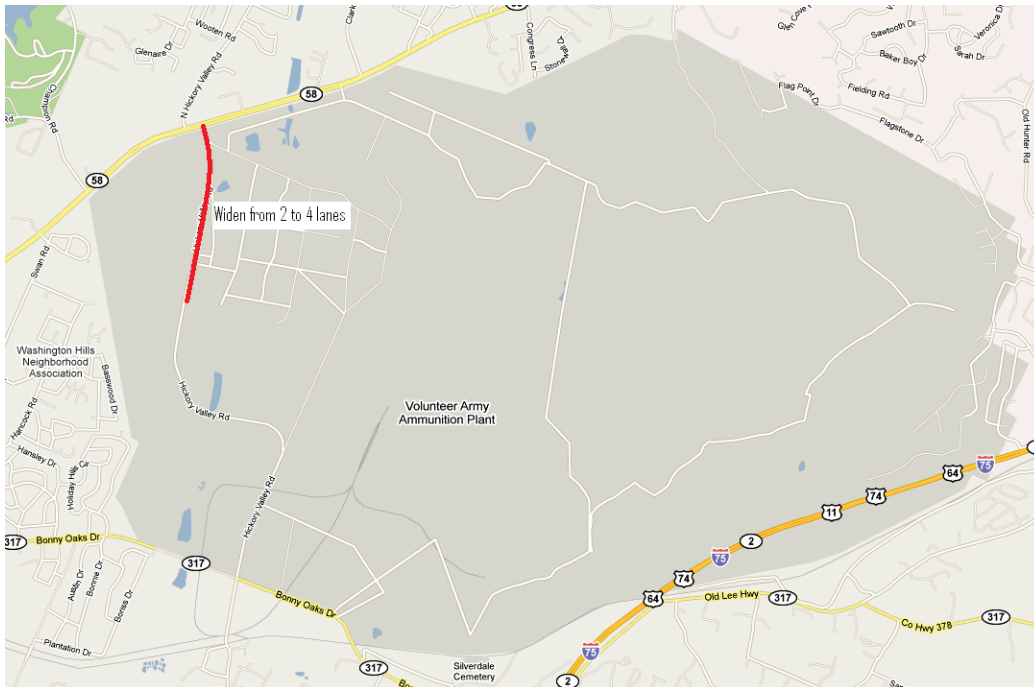
Fiscal Years 2011-2014 Transportation Improvement Program

NEW

TIP #	HICKVALLENTPARK58	TDOT PIN #	<input type="text"/>	Improvement Type	Widening	Lead Agency	Chattanooga
County	Hamilton	Length	1.1 mi	L RTP#	126	Conformity Status	Nonexempt
Route/Project Name	Hickory Valley Rd			Total Project Cost	\$569,623		
Termini or Intersection	Enterprise Parkway Extension to Hwy 58						
Project Description	Widen from 2 to 4 lanes						

Fiscal Year	Type of Work	Funding Type	Total Funds	Fed Funds	State Funds	Local Funds
2013	PE-N	HPP	\$274,373	\$219,498		\$54,875
2013	PE-D	HPP	\$295,250	\$236,200		\$59,050

Amendment 1 #	<input type="text" value="1"/>	Adjustment 1 #	<input type="text" value="1"/>	Remarks New page.
Amended on	<input type="text" value="4/19/2011"/>	Adjusted on	<input type="text" value="10/4/2012"/>	
Amendment 2 #	<input type="text"/>	Adjustment 2 #	<input type="text"/>	
Amended on	<input type="text"/>	Adjusted on	<input type="text"/>	



This map is for illustrative purposes only. Drawings depict conceptual project corridors and areas, not approved alignments.