



RESOLUTION NO. 2016-031

**A RESOLUTION APPROVING WITH CONDITION SUBDIVISION APPLICATION NUMBER 2016-031,
A REQUEST FOR A PRELIMINARY PLAT FOR SEVEN LAKE SUBDIVISION, A PLANNED UNIT
DEVELOPMENT, LOT 238, AND LOTS 241 THRU 292**

WHEREAS, Cornerstone Surveying and MAP Engineers submitted an application to the Chattanooga-Hamilton County Regional Planning Commission for the Preliminary Plat for Seven Lakes Subdivision, a Planned Unit Development Lot 238, and Lots 241 thru 292; and,

WHEREAS, the Preliminary Plat proposes to subdivide Hamilton County Tax Map 104K-A-014; and,

WHEREAS, on June 13th, 2016 the Chattanooga-Hamilton County Regional Planning Commission, pursuant to the provisions of the Hamilton County Subdivision Regulations conducted a public hearing on said Preliminary Plat; and,

WHEREAS, all materials submitted and related to the Preliminary Plat have been reviewed by utilities, Hamilton County Departmental staff, and other departments and agencies involved in the subdivision review are found to be in compliance with the Hamilton County Subdivision Regulations; and,

WHEREAS, the Planning Commission heard and considered all statements related to the proposed Preliminary Plat; and,

WHEREAS, there was no opposition present for the application for the Preliminary Plat.

NOW THEREFORE, BE IT RESOLVED that the Chattanooga-Hamilton County Regional Planning Commission, on June 13th, 2016 does hereby approve the Preliminary Plat for Seven Lakes Subdivision, A Planned Unit Development Lot 238, and Lots 241 thru 292 subject to the following condition:

- **Submittal of public sanitary sewer plans to Hamilton County WWTA for their review and approval**

A copy of the approved Preliminary Plat is hereby attached as part of this Resolution.

Approved this 14th Day of June 2016

Respectfully Submitted



Bryan Shults, Principal Planner

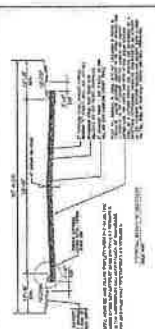
RECEIVED
MAY 3 2016

APPROVED FOR RECORDATION
HAMILTON COUNTY GIS DEPT
BY: [Signature]
DATE: MAY 3 2016
OFFICIAL: [Signature]
TITLE: [Signature]
ADDRESS: [Signature]

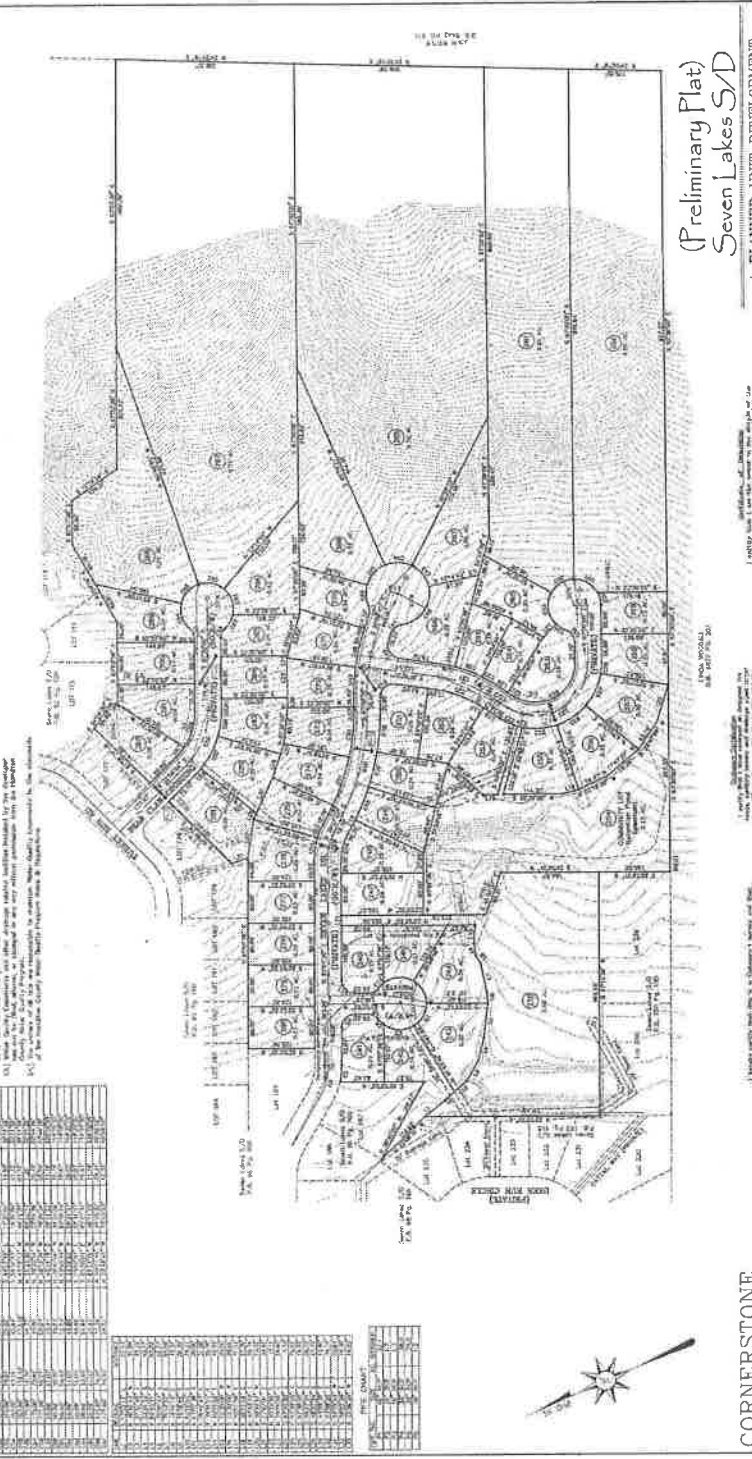


GENERAL NOTES:
1. The S/D was prepared in accordance with the Surveying Code of Tennessee.
2. The S/D was prepared in accordance with the Surveying Code of Tennessee.
3. The S/D was prepared in accordance with the Surveying Code of Tennessee.
4. The S/D was prepared in accordance with the Surveying Code of Tennessee.
5. The S/D was prepared in accordance with the Surveying Code of Tennessee.
6. The S/D was prepared in accordance with the Surveying Code of Tennessee.
7. The S/D was prepared in accordance with the Surveying Code of Tennessee.
8. The S/D was prepared in accordance with the Surveying Code of Tennessee.
9. The S/D was prepared in accordance with the Surveying Code of Tennessee.
10. The S/D was prepared in accordance with the Surveying Code of Tennessee.

| NO. | DESCRIPTION | DATE |
|-----|-------------|------|
| 1 | | |
| 2 | | |
| 3 | | |
| 4 | | |
| 5 | | |
| 6 | | |
| 7 | | |
| 8 | | |
| 9 | | |
| 10 | | |
| 11 | | |
| 12 | | |
| 13 | | |
| 14 | | |
| 15 | | |
| 16 | | |
| 17 | | |
| 18 | | |
| 19 | | |
| 20 | | |
| 21 | | |
| 22 | | |
| 23 | | |
| 24 | | |
| 25 | | |
| 26 | | |
| 27 | | |
| 28 | | |
| 29 | | |
| 30 | | |
| 31 | | |
| 32 | | |
| 33 | | |
| 34 | | |
| 35 | | |
| 36 | | |
| 37 | | |
| 38 | | |
| 39 | | |
| 40 | | |
| 41 | | |
| 42 | | |
| 43 | | |
| 44 | | |
| 45 | | |
| 46 | | |
| 47 | | |
| 48 | | |
| 49 | | |
| 50 | | |
| 51 | | |
| 52 | | |
| 53 | | |
| 54 | | |
| 55 | | |
| 56 | | |
| 57 | | |
| 58 | | |
| 59 | | |
| 60 | | |
| 61 | | |
| 62 | | |
| 63 | | |
| 64 | | |
| 65 | | |
| 66 | | |
| 67 | | |
| 68 | | |
| 69 | | |
| 70 | | |
| 71 | | |
| 72 | | |
| 73 | | |
| 74 | | |
| 75 | | |
| 76 | | |
| 77 | | |
| 78 | | |
| 79 | | |
| 80 | | |
| 81 | | |
| 82 | | |
| 83 | | |
| 84 | | |
| 85 | | |
| 86 | | |
| 87 | | |
| 88 | | |
| 89 | | |
| 90 | | |
| 91 | | |
| 92 | | |
| 93 | | |
| 94 | | |
| 95 | | |
| 96 | | |
| 97 | | |
| 98 | | |
| 99 | | |
| 100 | | |



NOTES:
1. The S/D was prepared in accordance with the Surveying Code of Tennessee.
2. The S/D was prepared in accordance with the Surveying Code of Tennessee.
3. The S/D was prepared in accordance with the Surveying Code of Tennessee.
4. The S/D was prepared in accordance with the Surveying Code of Tennessee.
5. The S/D was prepared in accordance with the Surveying Code of Tennessee.
6. The S/D was prepared in accordance with the Surveying Code of Tennessee.
7. The S/D was prepared in accordance with the Surveying Code of Tennessee.
8. The S/D was prepared in accordance with the Surveying Code of Tennessee.
9. The S/D was prepared in accordance with the Surveying Code of Tennessee.
10. The S/D was prepared in accordance with the Surveying Code of Tennessee.



(Preliminary Plat)
Seven Lakes S/D
A PLANNED UNIT DEVELOPMENT
(LOTS 238, 241-292)
Located in the Second Civil District of
Hamilton County, Tennessee

CORNERSTONE
SURVEYING, LLC
P.O. Box 25
0001 TEWAH, TN 37063
(615) 238-4892

DATE: 05-20-16

Scale: 1" = 40' (Horizontal)
1" = 80' (Vertical)