



RESOLUTION NO. 2016-043

**A RESOLUTION APPROVING SUBDIVISION APPLICATION NUMBER 2016-043,
A REQUEST FOR A PRELIMINARY PLAT FOR GEORGE LUTTRELL FARMS SUBDIVISION
LOTS 1 THRU 104**

WHEREAS, David Mathews Surveying has submitted an application to the Chattanooga-Hamilton County Regional Planning Commission for a Preliminary Plat for George Luttrell Farms Subdivision Lots 1 thru 104; and,

WHEREAS, the Preliminary Plat proposes to subdivide Hamilton County Tax Map 041-152; and,

WHEREAS, on August 8th, 2016 the Chattanooga-Hamilton County Regional Planning Commission, pursuant to the provisions of the Hamilton County Subdivision Regulations conducted a public hearing on said Preliminary Plat; and,

WHEREAS, all materials submitted and related to the Preliminary Plat have been reviewed by utilities, Hamilton County Departmental staff, and other departments and agencies involved in the subdivision review are found to be in compliance with the Hamilton County Subdivision Regulations; and,

WHEREAS, the Planning Commission heard and considered all statements related to the proposed Preliminary Plat; and,

WHEREAS, there was no opposition present for the application for the Preliminary Plat.

NOW THEREFORE, BE IT RESOLVED that the Chattanooga-Hamilton County Regional Planning Commission, on August 8th, 2016 does hereby approve the Preliminary Plat for George Luttrell Farms Subdivision Lots 1 thru 104, subject to the following condition:

- **Submittal for review and approval of septic tank use for these lots from the Hamilton County Ground Water Protection.**

A copy of the approved Preliminary Plat is hereby attached as part of this Resolution.

Approved this 9th Day of August 2016

Respectfully Submitted

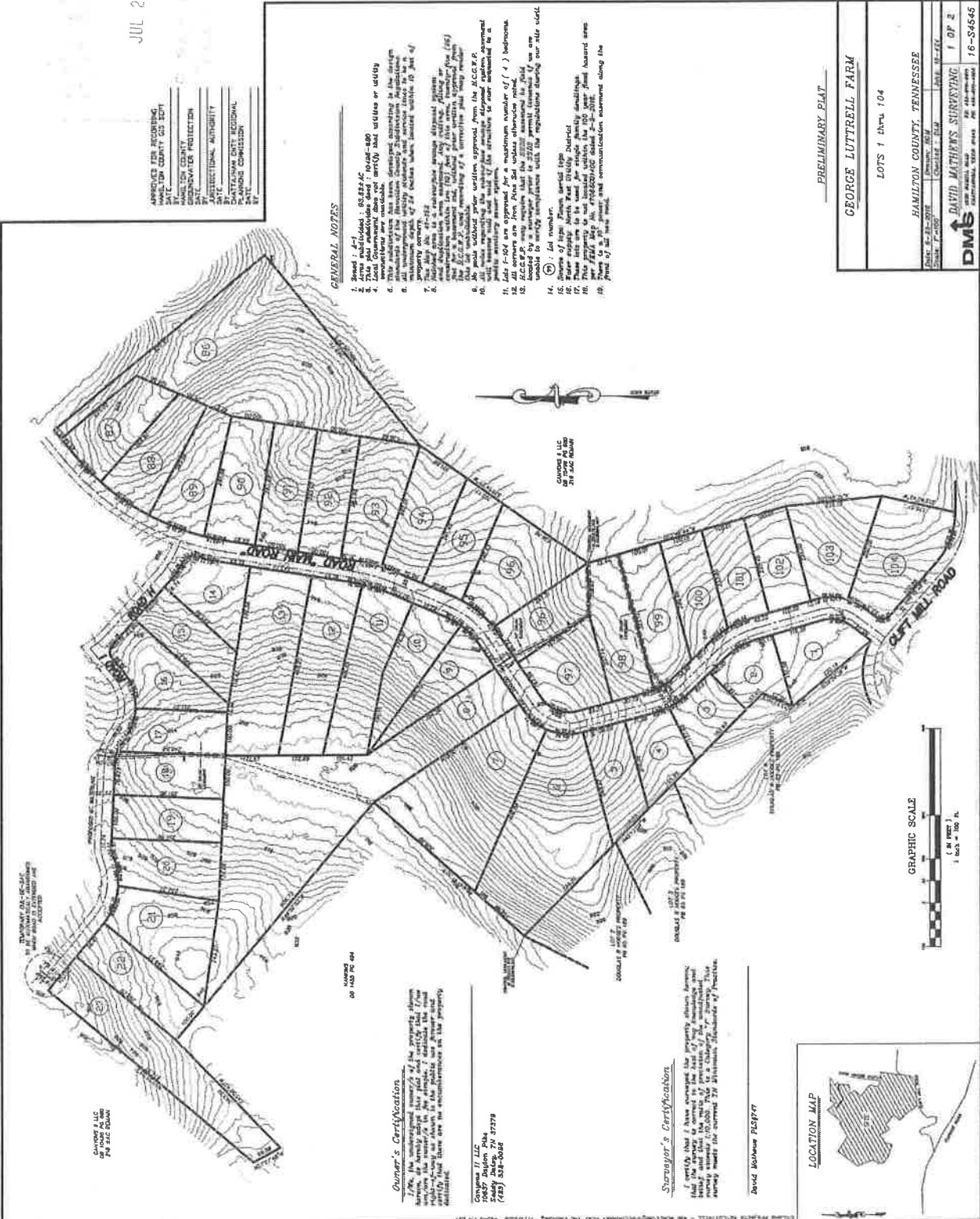
Bryan Shults, Principal Planner

JUL 20 2016

APPROVER FOR RECORDING:
DAVE TOM
HAMILTON COUNTY GIS DEPT
GREENWATER PROTECTION
BY: [Signature]
DATE: [Blank]
PATTANAWA DIST. REGIONAL
PLANNING COMMISSION
BY: [Signature]

GENERAL NOTES

1. Sheet 1 of 2.
2. This plan shall be used in accordance with the specifications and standards of the American Institute of Professional Surveyors (AIPSS).
3. This plan shall be used in accordance with the specifications and standards of the American Institute of Professional Surveyors (AIPSS).
4. This plan shall be used in accordance with the specifications and standards of the American Institute of Professional Surveyors (AIPSS).
5. This plan shall be used in accordance with the specifications and standards of the American Institute of Professional Surveyors (AIPSS).
6. This plan shall be used in accordance with the specifications and standards of the American Institute of Professional Surveyors (AIPSS).
7. This plan shall be used in accordance with the specifications and standards of the American Institute of Professional Surveyors (AIPSS).
8. This plan shall be used in accordance with the specifications and standards of the American Institute of Professional Surveyors (AIPSS).
9. This plan shall be used in accordance with the specifications and standards of the American Institute of Professional Surveyors (AIPSS).
10. This plan shall be used in accordance with the specifications and standards of the American Institute of Professional Surveyors (AIPSS).
11. This plan shall be used in accordance with the specifications and standards of the American Institute of Professional Surveyors (AIPSS).
12. This plan shall be used in accordance with the specifications and standards of the American Institute of Professional Surveyors (AIPSS).
13. This plan shall be used in accordance with the specifications and standards of the American Institute of Professional Surveyors (AIPSS).
14. This plan shall be used in accordance with the specifications and standards of the American Institute of Professional Surveyors (AIPSS).
15. This plan shall be used in accordance with the specifications and standards of the American Institute of Professional Surveyors (AIPSS).
16. This plan shall be used in accordance with the specifications and standards of the American Institute of Professional Surveyors (AIPSS).
17. This plan shall be used in accordance with the specifications and standards of the American Institute of Professional Surveyors (AIPSS).
18. This plan shall be used in accordance with the specifications and standards of the American Institute of Professional Surveyors (AIPSS).
19. This plan shall be used in accordance with the specifications and standards of the American Institute of Professional Surveyors (AIPSS).
20. This plan shall be used in accordance with the specifications and standards of the American Institute of Professional Surveyors (AIPSS).



PRELIMINARY PLAN	
GEORGE LUTTRELL FARM	
LOTS 1 thru 104	
HAMILTON COUNTY, TENNESSEE	
DATE OF SURVEY	DATE OF PLAN
BY: [Signature]	BY: [Signature]
FOR: [Blank]	FOR: [Blank]
DMS	
DAVID MATHEWS SURVEYING	
16-S-54545	

Surveyor's License
No. 10372
David Mathews

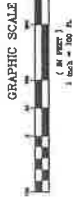
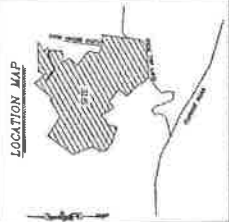
Surveyor's License
No. 10372
David Mathews

Owner's Certification
I, the undersigned, being the owner of the property shown hereon, do hereby certify that the plan and sections hereon shown are correct and true to the actual conditions of the property and that there are no encumbrances on the property hereon.

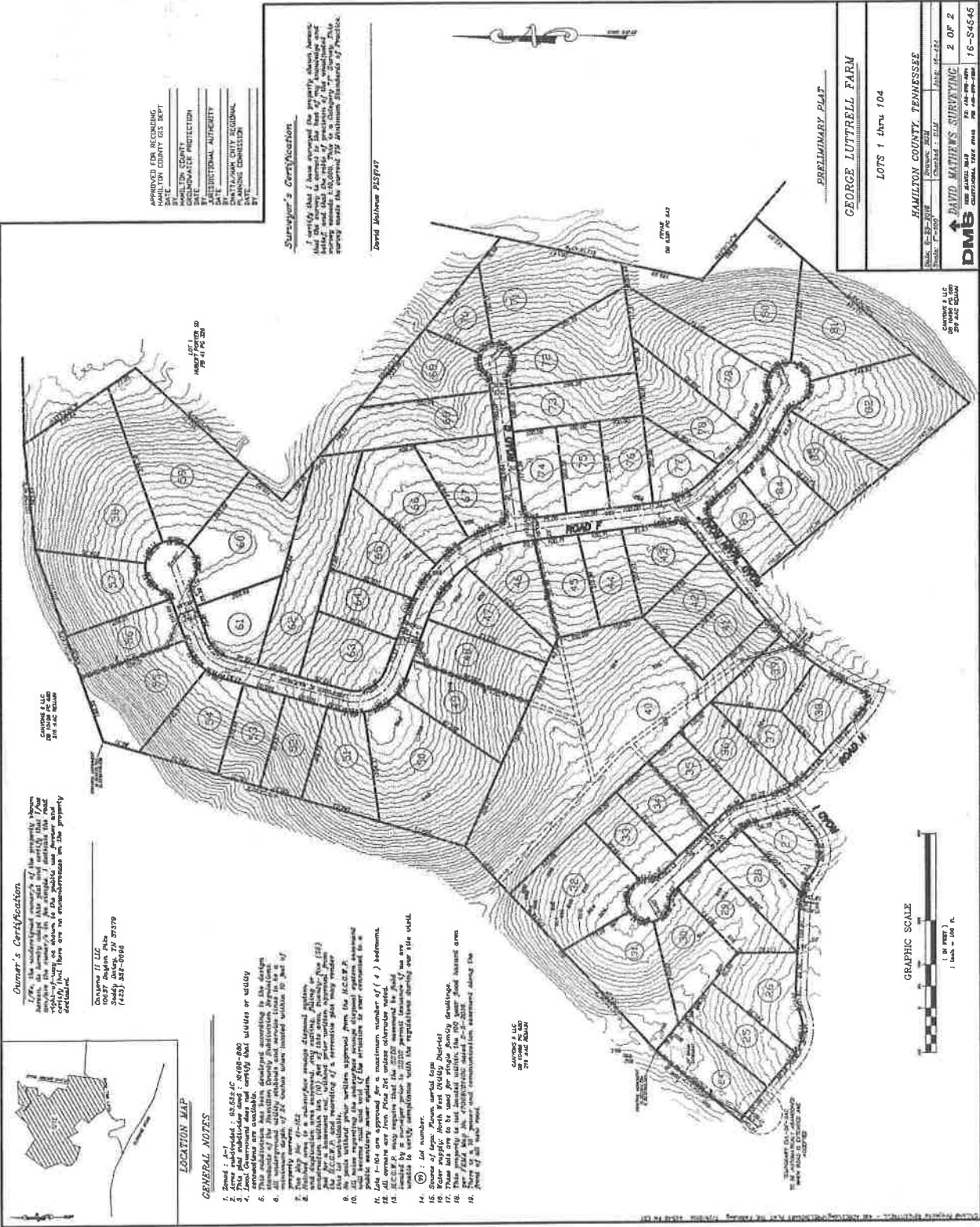
Surveyor's License
No. 10372
David Mathews

Surveyor's Certification
I certify that I have surveyed the property shown hereon and that the same is correct to the best of my knowledge and belief, and that I am a duly licensed Surveyor in the State of Tennessee.

Surveyor's License
No. 10372
David Mathews



JUL 20 2016



Owner's Certification
 I, the undersigned owner of the property shown herein, do hereby certify that the plat and map are correct and true to the original survey and that there are no encroachments on the property shown.

OWNER: J. L. LUC
 10077 Dayton Pike
 Sodus Depot, TN 37379
 (615) 582-0010



LOCATION NOTES

1. Zone indicated: 03.03.01
2. This plat subdivision does not conform to the zoning ordinance or code.
3. The plat subdivision does not conform to the zoning ordinance or code.
4. The plat subdivision does not conform to the zoning ordinance or code.
5. The plat subdivision does not conform to the zoning ordinance or code.
6. The plat subdivision does not conform to the zoning ordinance or code.
7. The plat subdivision does not conform to the zoning ordinance or code.
8. The plat subdivision does not conform to the zoning ordinance or code.
9. The plat subdivision does not conform to the zoning ordinance or code.
10. The plat subdivision does not conform to the zoning ordinance or code.
11. The plat subdivision does not conform to the zoning ordinance or code.
12. The plat subdivision does not conform to the zoning ordinance or code.
13. The plat subdivision does not conform to the zoning ordinance or code.
14. The plat subdivision does not conform to the zoning ordinance or code.
15. The plat subdivision does not conform to the zoning ordinance or code.
16. The plat subdivision does not conform to the zoning ordinance or code.
17. The plat subdivision does not conform to the zoning ordinance or code.
18. The plat subdivision does not conform to the zoning ordinance or code.
19. The plat subdivision does not conform to the zoning ordinance or code.
20. The plat subdivision does not conform to the zoning ordinance or code.
21. The plat subdivision does not conform to the zoning ordinance or code.
22. The plat subdivision does not conform to the zoning ordinance or code.
23. The plat subdivision does not conform to the zoning ordinance or code.
24. The plat subdivision does not conform to the zoning ordinance or code.
25. The plat subdivision does not conform to the zoning ordinance or code.
26. The plat subdivision does not conform to the zoning ordinance or code.
27. The plat subdivision does not conform to the zoning ordinance or code.
28. The plat subdivision does not conform to the zoning ordinance or code.
29. The plat subdivision does not conform to the zoning ordinance or code.
30. The plat subdivision does not conform to the zoning ordinance or code.
31. The plat subdivision does not conform to the zoning ordinance or code.
32. The plat subdivision does not conform to the zoning ordinance or code.
33. The plat subdivision does not conform to the zoning ordinance or code.
34. The plat subdivision does not conform to the zoning ordinance or code.
35. The plat subdivision does not conform to the zoning ordinance or code.
36. The plat subdivision does not conform to the zoning ordinance or code.
37. The plat subdivision does not conform to the zoning ordinance or code.
38. The plat subdivision does not conform to the zoning ordinance or code.
39. The plat subdivision does not conform to the zoning ordinance or code.
40. The plat subdivision does not conform to the zoning ordinance or code.
41. The plat subdivision does not conform to the zoning ordinance or code.
42. The plat subdivision does not conform to the zoning ordinance or code.
43. The plat subdivision does not conform to the zoning ordinance or code.
44. The plat subdivision does not conform to the zoning ordinance or code.
45. The plat subdivision does not conform to the zoning ordinance or code.
46. The plat subdivision does not conform to the zoning ordinance or code.
47. The plat subdivision does not conform to the zoning ordinance or code.
48. The plat subdivision does not conform to the zoning ordinance or code.
49. The plat subdivision does not conform to the zoning ordinance or code.
50. The plat subdivision does not conform to the zoning ordinance or code.
51. The plat subdivision does not conform to the zoning ordinance or code.
52. The plat subdivision does not conform to the zoning ordinance or code.
53. The plat subdivision does not conform to the zoning ordinance or code.
54. The plat subdivision does not conform to the zoning ordinance or code.
55. The plat subdivision does not conform to the zoning ordinance or code.
56. The plat subdivision does not conform to the zoning ordinance or code.
57. The plat subdivision does not conform to the zoning ordinance or code.
58. The plat subdivision does not conform to the zoning ordinance or code.
59. The plat subdivision does not conform to the zoning ordinance or code.
60. The plat subdivision does not conform to the zoning ordinance or code.
61. The plat subdivision does not conform to the zoning ordinance or code.
62. The plat subdivision does not conform to the zoning ordinance or code.
63. The plat subdivision does not conform to the zoning ordinance or code.
64. The plat subdivision does not conform to the zoning ordinance or code.
65. The plat subdivision does not conform to the zoning ordinance or code.
66. The plat subdivision does not conform to the zoning ordinance or code.
67. The plat subdivision does not conform to the zoning ordinance or code.
68. The plat subdivision does not conform to the zoning ordinance or code.
69. The plat subdivision does not conform to the zoning ordinance or code.
70. The plat subdivision does not conform to the zoning ordinance or code.
71. The plat subdivision does not conform to the zoning ordinance or code.
72. The plat subdivision does not conform to the zoning ordinance or code.
73. The plat subdivision does not conform to the zoning ordinance or code.
74. The plat subdivision does not conform to the zoning ordinance or code.
75. The plat subdivision does not conform to the zoning ordinance or code.
76. The plat subdivision does not conform to the zoning ordinance or code.
77. The plat subdivision does not conform to the zoning ordinance or code.
78. The plat subdivision does not conform to the zoning ordinance or code.
79. The plat subdivision does not conform to the zoning ordinance or code.
80. The plat subdivision does not conform to the zoning ordinance or code.
81. The plat subdivision does not conform to the zoning ordinance or code.
82. The plat subdivision does not conform to the zoning ordinance or code.
83. The plat subdivision does not conform to the zoning ordinance or code.
84. The plat subdivision does not conform to the zoning ordinance or code.
85. The plat subdivision does not conform to the zoning ordinance or code.
86. The plat subdivision does not conform to the zoning ordinance or code.
87. The plat subdivision does not conform to the zoning ordinance or code.
88. The plat subdivision does not conform to the zoning ordinance or code.
89. The plat subdivision does not conform to the zoning ordinance or code.
90. The plat subdivision does not conform to the zoning ordinance or code.
91. The plat subdivision does not conform to the zoning ordinance or code.
92. The plat subdivision does not conform to the zoning ordinance or code.
93. The plat subdivision does not conform to the zoning ordinance or code.
94. The plat subdivision does not conform to the zoning ordinance or code.
95. The plat subdivision does not conform to the zoning ordinance or code.
96. The plat subdivision does not conform to the zoning ordinance or code.
97. The plat subdivision does not conform to the zoning ordinance or code.
98. The plat subdivision does not conform to the zoning ordinance or code.
99. The plat subdivision does not conform to the zoning ordinance or code.
100. The plat subdivision does not conform to the zoning ordinance or code.
101. The plat subdivision does not conform to the zoning ordinance or code.
102. The plat subdivision does not conform to the zoning ordinance or code.
103. The plat subdivision does not conform to the zoning ordinance or code.
104. The plat subdivision does not conform to the zoning ordinance or code.

APPROVED FOR RECORDING
 DATE: _____
 BY: _____
 HAMILTON COUNTY
 COMMUNITY PROTECTION
 DIVISION
 DATE: _____
 HAMILTON COUNTY REGIONAL
 PLANNING COMMISSION
 DATE: _____

Surveyor's Certification

I certify that I have surveyed the property shown herein and that the survey is correct to the best of my knowledge and belief. I am a duly licensed Professional Surveyor in the State of Tennessee. My license number is 10000. This survey was made in Hamilton County, Tennessee, on a University of Tennessee campus under the supervision of the Hamilton Board of Public Health.

David Mathews 252747

PRELIMINARY PLAT
 GEORGE LUTTRELL FARM
 LOTS 1 thru 104

HAMILTON COUNTY, TENNESSEE	
Book: _____	Page: _____
Map: _____	Sheet: _____
DMS	
2 OF 2	
16-S4545	



OWNER'S LIC
 OR TOWER PC 142
 TN SAC 0000