



RESOLUTION 2015-066

**A RESOLUTION APPROVING SUBDIVISION APPLICATION NUMBER 2015-66,
A REQUEST FOR PRELIMINARY PLAT APPROVAL FOR THE CANYONS PLANNED UNIT
DEVELOPMENT (PUD), PHASE IV LOTS 230 THRU 250**

WHEREAS, David Mathews Surveying submitted an application to the Chattanooga-Hamilton County Regional Planning Commission for a Preliminary Plat of The Canyons PUD, Phase IV Lots 230 thru 250; and,

WHEREAS, the proposed subdivision intends to subdivide Hamilton County Tax Map 081-085; and,

WHEREAS, on November 09th, 2015 the Chattanooga-Hamilton County Regional Planning Commission, pursuant to the provisions of the Hamilton County Subdivision Regulations conducted a public hearing on said Preliminary Plat; and,

WHEREAS, all materials submitted and related to the Preliminary Plat have been reviewed by utilities, Hamilton County Departmental staff, and other departments and agencies involved in the subdivision review and has been found to be in compliance with the Hamilton County Subdivision Regulations; and,

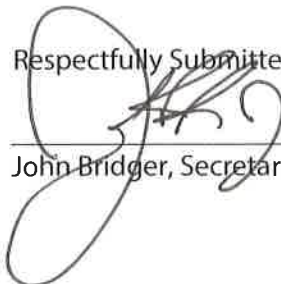
WHEREAS, the Planning Commission heard and considered all statements related to the proposed Preliminary Plat; and,

WHEREAS, there was no opposition present for the application for the Preliminary Plat.

NOW THEREFORE, BE IT RESOLVED that the Planning Commission, on November 09th, 2015 does hereby approve the Preliminary Plat for The Canyons PUD, Phase IV Lots 230 thru 250.

A copy of the approved Preliminary Plat for The Canyons PUD, Phase IV, Lots 230 thru 250 is hereby attached as part of this Resolution.

Approved this 10th Day of November 2015

Respectfully Submitted


John Bridger, Secretary

Owner's Certification & Dedication

I, the undersigned, being the owner of the above described land, do hereby certify that the same is being dedicated to the public use for the purpose of a road and that I have no other interest in the same and that I have no other claims on the property.

David Mathews
 230 Teru 250
 Hamilton County, Tennessee
 (423) 228-0398

Surveyor's Certification

I, the undersigned, being duly qualified and sworn, do hereby certify that the foregoing is a true and correct copy of the original survey as shown to me by the owner of the same and that the same is a true and correct copy of the original survey as shown to me by the owner of the same.

David Mathews 230797

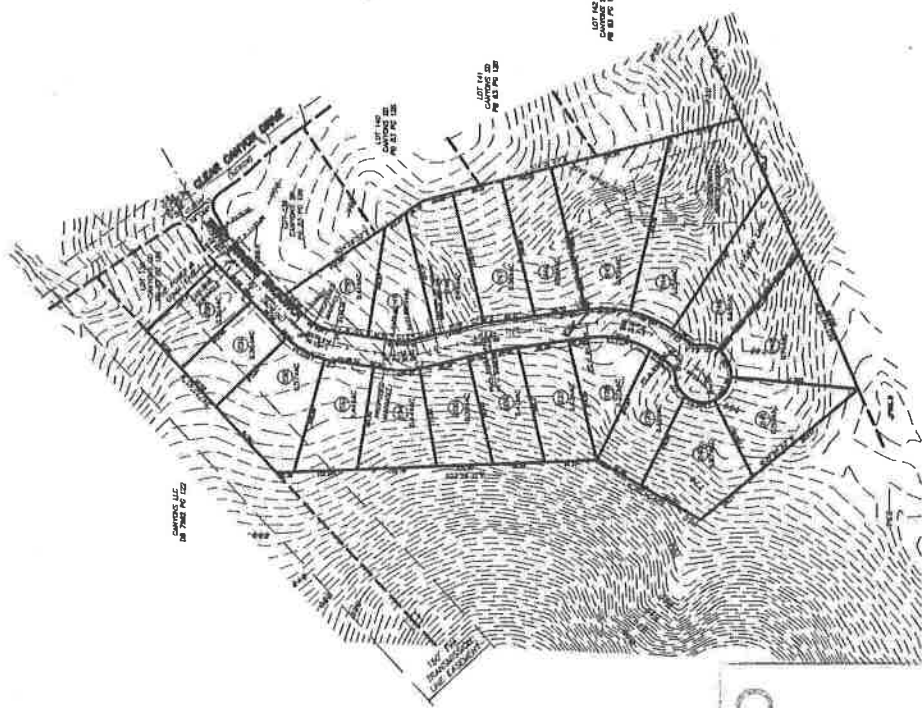
APPROVED FOR RECORDING
 HAMILTON COUNTY CLERK
 DATE _____
 HAMILTON COUNTY WORK
 DATE _____
 JUDICIAL AUTHORITY
 DATE _____
 CHATTAHOOCHEE COUNTY REGIONAL
 PLANNING COMMISSION
 DATE _____
 BY _____

GENERAL NOTES

1. Boundaries shown on this plat are based on the original survey as shown to me by the owner of the same.
2. The plat is subject to all laws, ordinances, rules and regulations of the Hamilton County Planning Commission and the Hamilton County Board of Commissioners.
3. The plat is subject to all laws, ordinances, rules and regulations of the Hamilton County Planning Commission and the Hamilton County Board of Commissioners.
4. The plat is subject to all laws, ordinances, rules and regulations of the Hamilton County Planning Commission and the Hamilton County Board of Commissioners.
5. The plat is subject to all laws, ordinances, rules and regulations of the Hamilton County Planning Commission and the Hamilton County Board of Commissioners.
6. The plat is subject to all laws, ordinances, rules and regulations of the Hamilton County Planning Commission and the Hamilton County Board of Commissioners.
7. The plat is subject to all laws, ordinances, rules and regulations of the Hamilton County Planning Commission and the Hamilton County Board of Commissioners.
8. The plat is subject to all laws, ordinances, rules and regulations of the Hamilton County Planning Commission and the Hamilton County Board of Commissioners.
9. The plat is subject to all laws, ordinances, rules and regulations of the Hamilton County Planning Commission and the Hamilton County Board of Commissioners.
10. The plat is subject to all laws, ordinances, rules and regulations of the Hamilton County Planning Commission and the Hamilton County Board of Commissioners.
11. The plat is subject to all laws, ordinances, rules and regulations of the Hamilton County Planning Commission and the Hamilton County Board of Commissioners.
12. The plat is subject to all laws, ordinances, rules and regulations of the Hamilton County Planning Commission and the Hamilton County Board of Commissioners.
13. The plat is subject to all laws, ordinances, rules and regulations of the Hamilton County Planning Commission and the Hamilton County Board of Commissioners.
14. The plat is subject to all laws, ordinances, rules and regulations of the Hamilton County Planning Commission and the Hamilton County Board of Commissioners.

CURVE TABLE

STATION	CHORD BEARING	CHORD LENGTH	ARC LENGTH	ANGLE
1+00	S 89° 59' 59" W	100.00	100.00	89° 59' 59"
2+00	S 89° 59' 59" W	100.00	100.00	89° 59' 59"
3+00	S 89° 59' 59" W	100.00	100.00	89° 59' 59"
4+00	S 89° 59' 59" W	100.00	100.00	89° 59' 59"
5+00	S 89° 59' 59" W	100.00	100.00	89° 59' 59"
6+00	S 89° 59' 59" W	100.00	100.00	89° 59' 59"
7+00	S 89° 59' 59" W	100.00	100.00	89° 59' 59"
8+00	S 89° 59' 59" W	100.00	100.00	89° 59' 59"
9+00	S 89° 59' 59" W	100.00	100.00	89° 59' 59"
10+00	S 89° 59' 59" W	100.00	100.00	89° 59' 59"
11+00	S 89° 59' 59" W	100.00	100.00	89° 59' 59"
12+00	S 89° 59' 59" W	100.00	100.00	89° 59' 59"
13+00	S 89° 59' 59" W	100.00	100.00	89° 59' 59"
14+00	S 89° 59' 59" W	100.00	100.00	89° 59' 59"
15+00	S 89° 59' 59" W	100.00	100.00	89° 59' 59"
16+00	S 89° 59' 59" W	100.00	100.00	89° 59' 59"
17+00	S 89° 59' 59" W	100.00	100.00	89° 59' 59"
18+00	S 89° 59' 59" W	100.00	100.00	89° 59' 59"
19+00	S 89° 59' 59" W	100.00	100.00	89° 59' 59"
20+00	S 89° 59' 59" W	100.00	100.00	89° 59' 59"
21+00	S 89° 59' 59" W	100.00	100.00	89° 59' 59"
22+00	S 89° 59' 59" W	100.00	100.00	89° 59' 59"
23+00	S 89° 59' 59" W	100.00	100.00	89° 59' 59"
24+00	S 89° 59' 59" W	100.00	100.00	89° 59' 59"
25+00	S 89° 59' 59" W	100.00	100.00	89° 59' 59"
26+00	S 89° 59' 59" W	100.00	100.00	89° 59' 59"
27+00	S 89° 59' 59" W	100.00	100.00	89° 59' 59"
28+00	S 89° 59' 59" W	100.00	100.00	89° 59' 59"
29+00	S 89° 59' 59" W	100.00	100.00	89° 59' 59"
30+00	S 89° 59' 59" W	100.00	100.00	89° 59' 59"



RECEIVED

OCT 26 2015

Hamilton County
 Regional Planning Agency
 Development Services

PRELIMINARY PLAT

CANYONS P.U.D.

LOTS 230 TERU 250
 PHASE 4

HAMILTON COUNTY, TENNESSEE

DAVID MATHIEWS SURVEYING

16-5443B