



RESOLUTION NO. 2016-032

**A RESOLUTION APPROVING WITH CONDITION SUBDIVISION APPLICATION NUMBER 2016-032,
A REQUEST FOR A PRELIMINARY PLAT FOR CORY ON MORRIS HILL SUBDIVISION,
A PLANNED UNIT DEVELOPMENT LOTS 1 THRU 26**

WHEREAS, David Mathews Surveying and MAP Engineers submitted an application to the Chattanooga-Hamilton County Regional Planning Commission for the Preliminary Plat for Cory on Morris Hill Subdivision, A Planned Unit Development, Lots 1 thru 26; and,

WHEREAS, the Preliminary Plat proposes to subdivide Hamilton County Tax Map 159K-A-001, 002, and 003; and,

WHEREAS, on June 13th, 2016 the Chattanooga-Hamilton County Regional Planning Commission, pursuant to the provisions of the City of Chattanooga Subdivision Regulations conducted a public hearing on said Preliminary Plat; and,

WHEREAS, all materials submitted and related to the Preliminary Plat have been reviewed by utilities, City of Chattanooga Departmental staff, and other departments and agencies involved in the subdivision review are found to be in compliance with the City of Chattanooga Subdivision Regulations; and,

WHEREAS, the Planning Commission heard and considered all statements related to the proposed Preliminary Plat; and,

WHEREAS, there was no opposition present for the application for the Preliminary Plat.

NOW THEREFORE, BE IT RESOLVED that the Chattanooga-Hamilton County Regional Planning Commission, on June 13th, 2016 does hereby approve the Preliminary Plat for Cory on Morris Hill Subdivision, A Planned Unit Development, Lots 1 thru 26.

A copy of the approved Preliminary Plat is hereby attached as part of this Resolution.

Approved this 14th Day of June 2016

Respectfully Submitted



Bryan Shults, Principal Planner

RECEIVED
MAY 23 2016

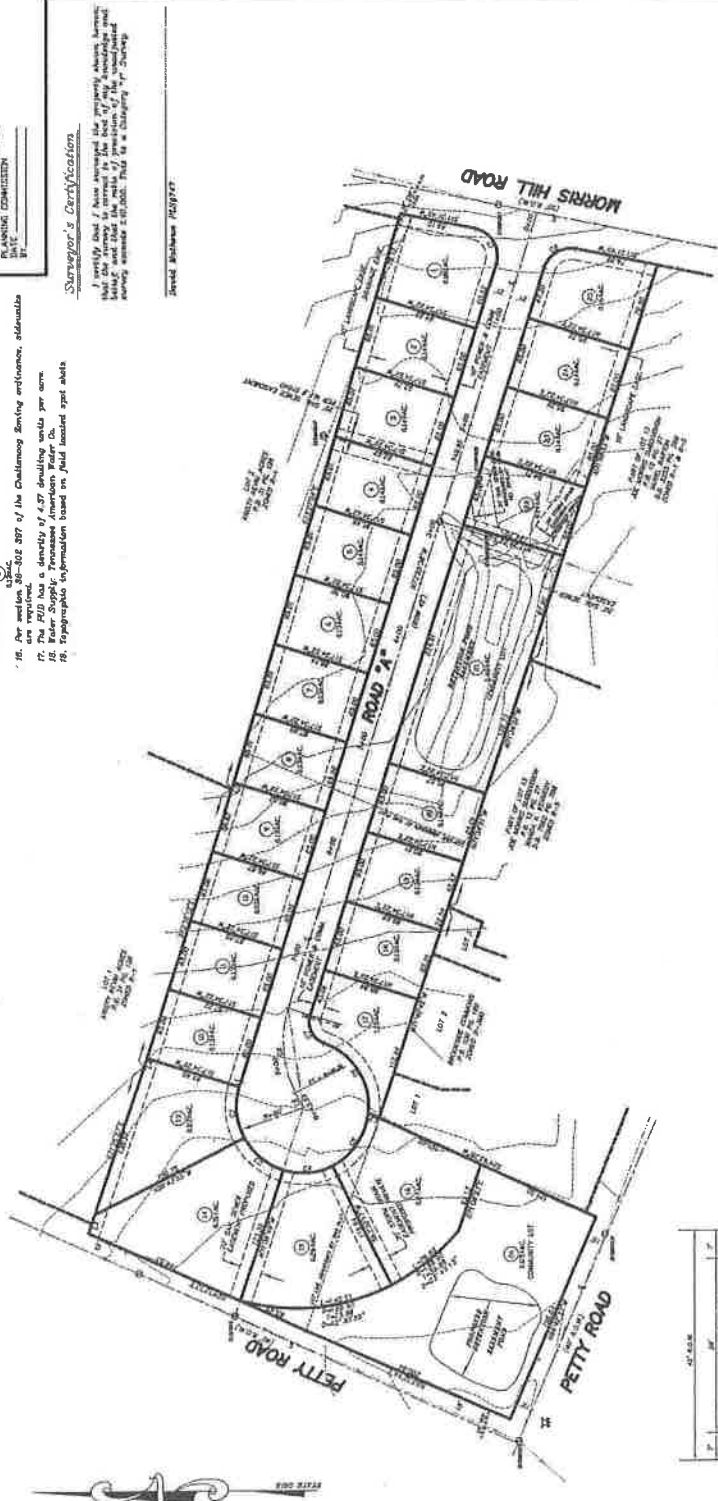
GENERAL NOTES

1. Send 1 set of PUD to the City of Chattanooga.
2. The City of Chattanooga will review the PUD and issue a letter of approval or disapproval.
3. The City of Chattanooga will review the PUD and issue a letter of approval or disapproval.
4. The City of Chattanooga will review the PUD and issue a letter of approval or disapproval.
5. The City of Chattanooga will review the PUD and issue a letter of approval or disapproval.
6. The City of Chattanooga will review the PUD and issue a letter of approval or disapproval.
7. The City of Chattanooga will review the PUD and issue a letter of approval or disapproval.
8. The City of Chattanooga will review the PUD and issue a letter of approval or disapproval.
9. The City of Chattanooga will review the PUD and issue a letter of approval or disapproval.
10. The City of Chattanooga will review the PUD and issue a letter of approval or disapproval.
11. The City of Chattanooga will review the PUD and issue a letter of approval or disapproval.
12. The City of Chattanooga will review the PUD and issue a letter of approval or disapproval.
13. The City of Chattanooga will review the PUD and issue a letter of approval or disapproval.
14. The City of Chattanooga will review the PUD and issue a letter of approval or disapproval.
15. The City of Chattanooga will review the PUD and issue a letter of approval or disapproval.
16. The City of Chattanooga will review the PUD and issue a letter of approval or disapproval.
17. The City of Chattanooga will review the PUD and issue a letter of approval or disapproval.
18. The City of Chattanooga will review the PUD and issue a letter of approval or disapproval.

Owner's Certification

I, the undersigned owner of the property shown hereon, do hereby certify that the information shown hereon is true and correct to the best of my knowledge and belief, and that I am not aware of any facts or circumstances which would render this information false or misleading.

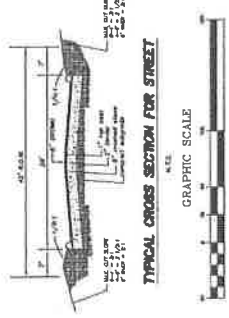
M. D. Adams and Burr C. Cory
P.O. Box 27183
Chattanooga, Tennessee 37424
(423) 354-1107



Surveyor's Certification

I certify that I have reviewed the survey shown hereon and that the same is correct to the best of my knowledge and belief, and that I am not aware of any facts or circumstances which would render this information false or misleading.

David Mathews Hayslett



Engineers Certification

I, the undersigned engineer, do hereby certify that the information shown hereon is true and correct to the best of my knowledge and belief, and that I am not aware of any facts or circumstances which would render this information false or misleading.

David Mathews Hayslett
P.O. Box 27183
Chattanooga, Tennessee 37424
(423) 354-1107

LINE TABLE

LINE	LENGTH	BEARING
1	100.00	N 00° 00' 00" E
2	100.00	N 00° 00' 00" E
3	100.00	N 00° 00' 00" E
4	100.00	N 00° 00' 00" E
5	100.00	N 00° 00' 00" E
6	100.00	N 00° 00' 00" E
7	100.00	N 00° 00' 00" E
8	100.00	N 00° 00' 00" E
9	100.00	N 00° 00' 00" E
10	100.00	N 00° 00' 00" E

CURVE TABLE

CURVE	LENGTH	ANGLE	DELTA ANGLE
1	100.00	90.00	90.00
2	100.00	90.00	90.00
3	100.00	90.00	90.00
4	100.00	90.00	90.00
5	100.00	90.00	90.00
6	100.00	90.00	90.00
7	100.00	90.00	90.00
8	100.00	90.00	90.00
9	100.00	90.00	90.00
10	100.00	90.00	90.00

PRELIMINARY PLAN

CORY ON MORRIS HILL P.U.D.

LOTS 1 THRU 26

CHATTANOOGA, HAMILTON COUNTY, TENNESSEE

DAVID MATHEWS SURVEYING
100 MORRIS HILL ROAD, CHATTANOOGA, TN 37424
PHONE: (423) 354-1107
FAX: (423) 354-1108

16-S4530