



RESOLUTION NO. 2016-030

**A RESOLUTION APPROVING WITH CONDITION SUBDIVISION APPLICATION NUMBER 2016-030,
A REQUEST FOR A PRELIMINARY PLAT FOR
STONEWALL FARMS SUBDIVISION LOTS 553 THRU 594**

WHEREAS, Richmond Surveying and Chattanooga Engineering Group submitted an application to the Chattanooga-Hamilton County Regional Planning Commission for the Preliminary Plat for Stonewall Farms Subdivision Lots 553 thru 594; and,

WHEREAS, the Preliminary Plat proposes to subdivide Hamilton County Tax Map 092-063.04; and,

WHEREAS, on June 13th, 2016 the Chattanooga-Hamilton County Regional Planning Commission, pursuant to the provisions of the Hamilton County Subdivision Regulations conducted a public hearing on said Preliminary Plat; and,

WHEREAS, all materials submitted and related to the Preliminary Plat have been reviewed by utilities, Hamilton County Departmental staff, and other departments and agencies involved in the subdivision review are found to be in compliance with the Hamilton County Subdivision Regulations; and,

WHEREAS, the Planning Commission heard and considered all statements related to the proposed Preliminary Plat; and,

WHEREAS, there was no opposition present for the application for the Preliminary Plat.

NOW THEREFORE, BE IT RESOLVED that the Chattanooga-Hamilton County Regional Planning Commission, on June 13th, 2016 does hereby approve the Preliminary Plat for Stonewall Farms Subdivision Lots 553 thru 594 subject to the following condition:

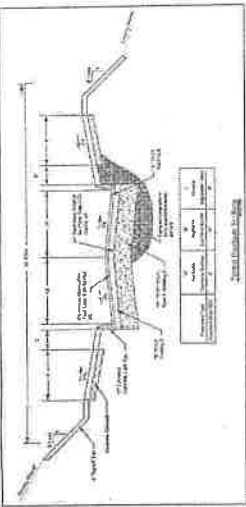
- **Submittal of public sanitary sewer plans to Hamilton County WWTA for their review and approval**

A copy of the approved Preliminary Plat is hereby attached as part of this Resolution.

Approved this 14th Day of June 2016

Respectfully Submitted

Bryan Shults, Principal Planner



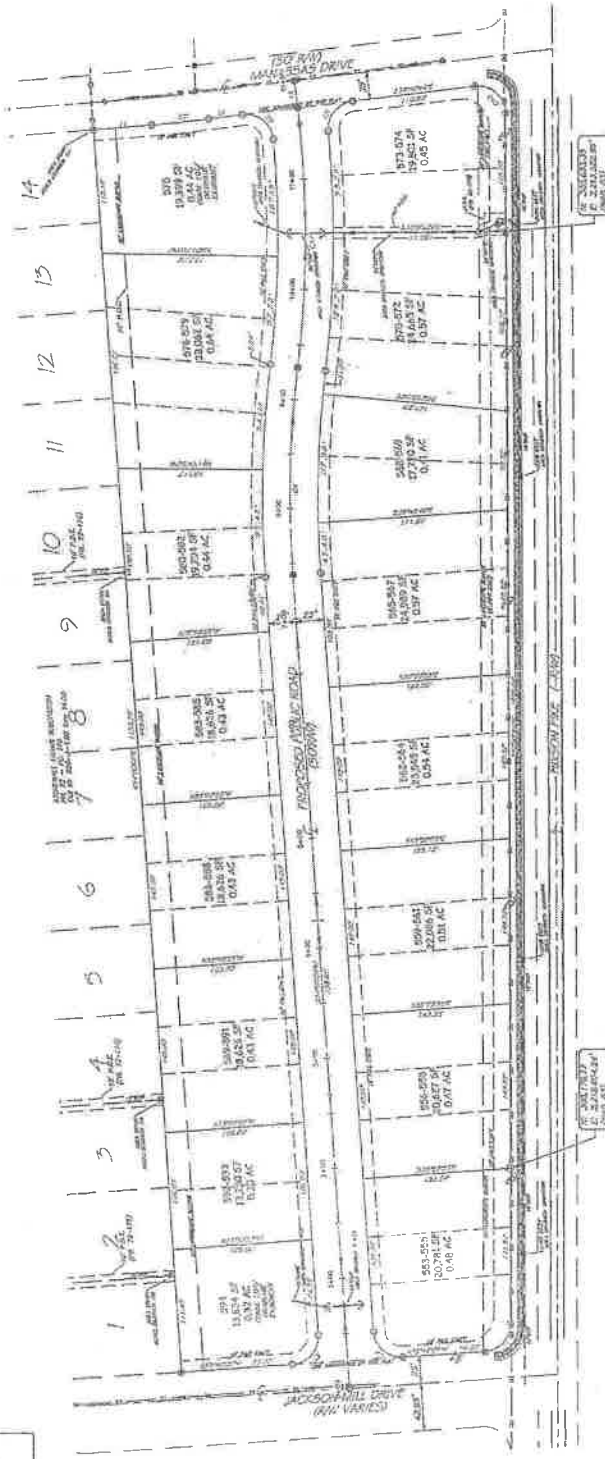
Lot #	Area (Sq Ft)	Area (Ac)	Area (Sq Ft)	Area (Ac)	Area (Sq Ft)	Area (Ac)
1	14,016	0.32	14,016	0.32	14,016	0.32
2	14,016	0.32	14,016	0.32	14,016	0.32
3	14,016	0.32	14,016	0.32	14,016	0.32
4	14,016	0.32	14,016	0.32	14,016	0.32
5	14,016	0.32	14,016	0.32	14,016	0.32
6	14,016	0.32	14,016	0.32	14,016	0.32
7	14,016	0.32	14,016	0.32	14,016	0.32
8	14,016	0.32	14,016	0.32	14,016	0.32
9	14,016	0.32	14,016	0.32	14,016	0.32
10	14,016	0.32	14,016	0.32	14,016	0.32
11	14,016	0.32	14,016	0.32	14,016	0.32
12	14,016	0.32	14,016	0.32	14,016	0.32
13	14,016	0.32	14,016	0.32	14,016	0.32
14	14,016	0.32	14,016	0.32	14,016	0.32

Lot #	Area (Sq Ft)	Area (Ac)
1	14,016	0.32
2	14,016	0.32
3	14,016	0.32
4	14,016	0.32
5	14,016	0.32
6	14,016	0.32
7	14,016	0.32
8	14,016	0.32
9	14,016	0.32
10	14,016	0.32
11	14,016	0.32
12	14,016	0.32
13	14,016	0.32
14	14,016	0.32

- NOTES:**
1. SHOWN FOR INFORMATION ONLY. NOT TO BE CONSIDERED AS A PART OF THE PROJECT.
 2. THIS PLAN IS A PRELIMINARY PLAN. IT IS SUBJECT TO CHANGE WITHOUT NOTICE.
 3. THE AREA SHOWN ON THIS PLAN IS NOT TO BE CONSIDERED AS A PART OF THE PROJECT.
 4. THE AREA SHOWN ON THIS PLAN IS NOT TO BE CONSIDERED AS A PART OF THE PROJECT.
 5. THE AREA SHOWN ON THIS PLAN IS NOT TO BE CONSIDERED AS A PART OF THE PROJECT.
 6. THE AREA SHOWN ON THIS PLAN IS NOT TO BE CONSIDERED AS A PART OF THE PROJECT.
 7. THE AREA SHOWN ON THIS PLAN IS NOT TO BE CONSIDERED AS A PART OF THE PROJECT.
 8. THE AREA SHOWN ON THIS PLAN IS NOT TO BE CONSIDERED AS A PART OF THE PROJECT.
 9. THE AREA SHOWN ON THIS PLAN IS NOT TO BE CONSIDERED AS A PART OF THE PROJECT.
 10. THE AREA SHOWN ON THIS PLAN IS NOT TO BE CONSIDERED AS A PART OF THE PROJECT.
 11. THE AREA SHOWN ON THIS PLAN IS NOT TO BE CONSIDERED AS A PART OF THE PROJECT.
 12. THE AREA SHOWN ON THIS PLAN IS NOT TO BE CONSIDERED AS A PART OF THE PROJECT.
 13. THE AREA SHOWN ON THIS PLAN IS NOT TO BE CONSIDERED AS A PART OF THE PROJECT.
 14. THE AREA SHOWN ON THIS PLAN IS NOT TO BE CONSIDERED AS A PART OF THE PROJECT.



- LEGEND:**
- INDICATES EXISTING UTILITIES (E.g., 2" W, 12" S, 6" G, 1" W, 4" S)
 - INDICATES EXISTING UTILITIES (E.g., 2" W, 12" S, 6" G, 1" W, 4" S)
 - INDICATES EXISTING UTILITIES (E.g., 2" W, 12" S, 6" G, 1" W, 4" S)
 - INDICATES EXISTING UTILITIES (E.g., 2" W, 12" S, 6" G, 1" W, 4" S)
 - INDICATES EXISTING UTILITIES (E.g., 2" W, 12" S, 6" G, 1" W, 4" S)
 - INDICATES EXISTING UTILITIES (E.g., 2" W, 12" S, 6" G, 1" W, 4" S)
 - INDICATES EXISTING UTILITIES (E.g., 2" W, 12" S, 6" G, 1" W, 4" S)
 - INDICATES EXISTING UTILITIES (E.g., 2" W, 12" S, 6" G, 1" W, 4" S)
 - INDICATES EXISTING UTILITIES (E.g., 2" W, 12" S, 6" G, 1" W, 4" S)
 - INDICATES EXISTING UTILITIES (E.g., 2" W, 12" S, 6" G, 1" W, 4" S)



RECEIVED
MAY 23 2016

**PRELIMINARY PLAT
STONEWALL FARMS
LOTS 533 - 594**

BEING A PROPOSED TOWNHOUSE DEVELOPMENT LOCATED IN THE
THIRD CIVIL DISTRICT OF HAMILTON COUNTY, TENNESSEE.

DATE: 4-18-2016 SCALE: 1" = 50'

OWNER/DEVELOPER:
FATHERSON PARTNERSHIP
4:4 SPRING STREET
CHATTANOOGA, TN 37405
PHONE: 423-266-1252

RICHMOND SURVEYING CO.
380 W. STREET, SUITE 200
CLEVELAND, TN 37319
PHONE: (628) 479-7780