



---

**RESOLUTION NO. 2016-034**

**A RESOLUTION APPROVING SUBDIVISION APPLICATION NUMBER 2016-034,  
A REQUEST FOR A PRELIMINARY PLAT FOR THE VIEW AT WHITE OAK-PHASE 2  
LOTS 14 THRU 51**

**WHEREAS**, David Mathews Surveying submitted an application to the Chattanooga-Hamilton County Regional Planning Commission for the Preliminary Plat for The View at White Oak Subdivision Lots 14 thru 51; and,

**WHEREAS**, the Preliminary Plat proposes to subdivide Hamilton County Tax Map 086-013, and 086-035; and,

**WHEREAS**, on July 11<sup>th</sup>, 2016 the Chattanooga-Hamilton County Regional Planning Commission, pursuant to the provisions of the Hamilton County Subdivision Regulations conducted a public hearing on said Preliminary Plat; and,

**WHEREAS**, all materials submitted and related to the Preliminary Plat have been reviewed by utilities, Hamilton County Departmental staff, and other departments and agencies involved in the subdivision review are found to be in compliance with the Hamilton County Subdivision Regulations; and,

**WHEREAS**, the Planning Commission heard and considered all statements related to the proposed Preliminary Plat; and,


**WHEREAS**, there was no opposition present for the application for the Preliminary Plat.

**NOW THEREFORE, BE IT RESOLVED** that the Chattanooga-Hamilton County Regional Planning Commission, on July 11<sup>th</sup>, 2016 does hereby approve the Preliminary Plat for The View at White Oak Subdivision Lots 14 thru 51.

A copy of the approved Preliminary Plat is hereby attached as part of this Resolution.

Approved this 12<sup>th</sup> Day of July 2016

Respectfully Submitted

  
\_\_\_\_\_  
Bryan Shults, Principal Planner

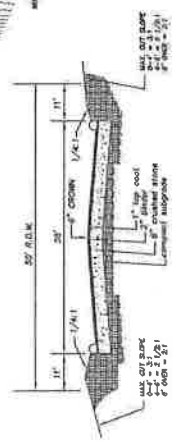
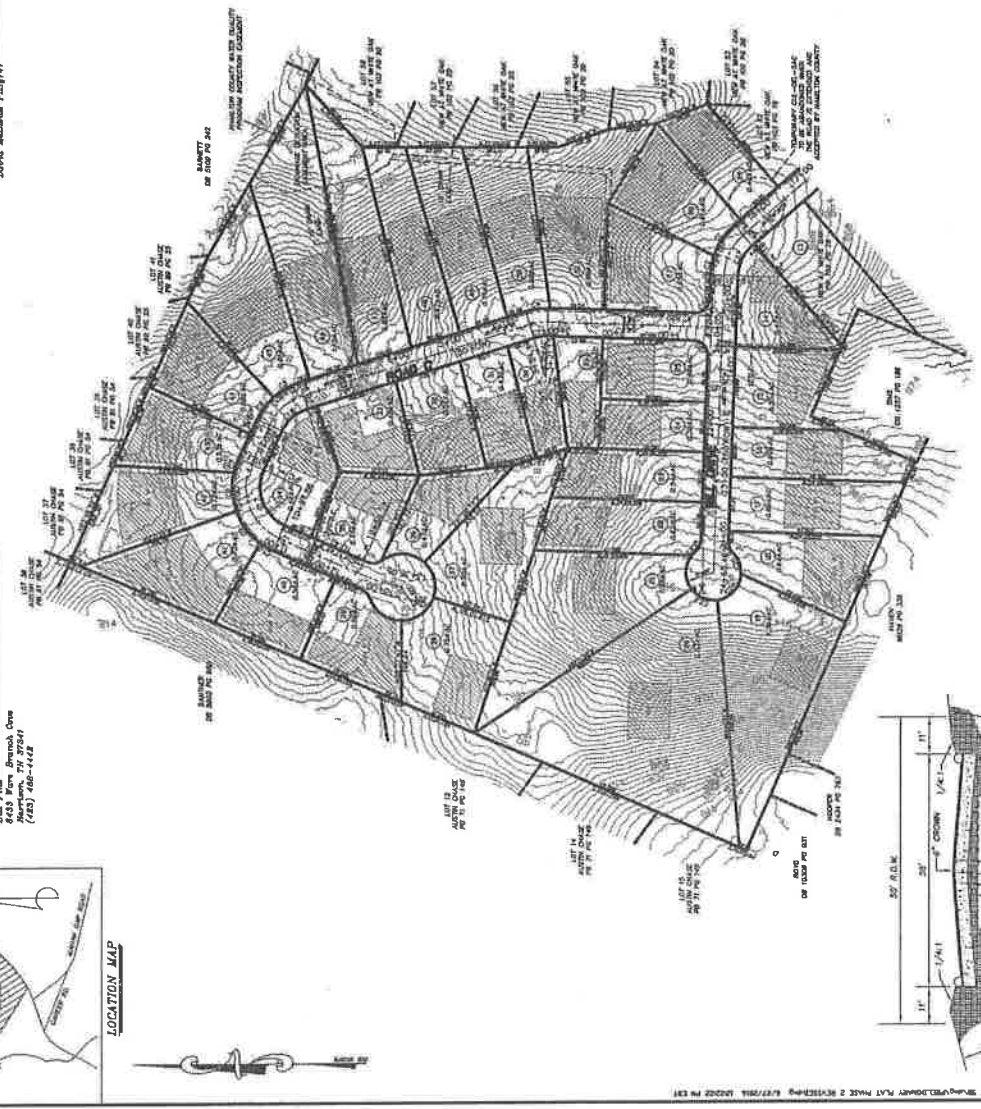


**Owner's Certification**  
 I, the undersigned, being the owner of the above described land, do hereby certify that the same is for the above and lawful purposes as stated in the accompanying plat. I am a resident of Hamilton County, Tennessee.

DAVID MATHIAS  
 1405 W. BIRCHWOOD DR  
 MEMPHIS, TN 37504  
 (901) 486-1448

**Surveyor's Certification**  
 I certify that I have prepared the property shown herein and that the same is for the above and lawful purposes as stated in the accompanying plat. This is a plat for a subdivision of land.

DAVID MATHIAS 2102947



TYPICAL CROSS SECTION FOR STREET  
 ROAD A



APPROVED FOR RECORDING  
 HAMILTON COUNTY GIS DEPT.  
 DATE: 6/27/2016  
 PROJECT: 2102947  
 SUBMITTER: DAVID MATHIAS  
 DATE: 6/27/2016  
 JURISDICTIONAL AUTHORITY  
 BY: DAVID MATHIAS  
 CONTRACTING RECORDAL  
 DATE: 6/27/2016

JUN 27 2016

- GENERAL NOTES**
1. Road A is 20 feet wide.
  2. Road B is 20 feet wide.
  3. Road C is 20 feet wide.
  4. All easements are 10 feet wide.
  5. The subdivision has been developed according to the design standards of the Hamilton County Subdivision Regulations.
  6. The subdivision is subject to the Hamilton County Subdivision Regulations.
  7. The plat shows 24 lots.
  8. The plat shows 3 roads.
  9. The plat shows 3 easements.
  10. The plat shows 3 easements.
  11. The plat shows 3 easements.
  12. The plat shows 3 easements.
  13. The plat shows 3 easements.
  14. The plat shows 3 easements.
  15. The plat shows 3 easements.
  16. The plat shows 3 easements.
  17. The plat shows 3 easements.
  18. The plat shows 3 easements.

CHANGING	CHANGING	CHANGING	CHANGING
1	1	1	1
2	2	2	2
3	3	3	3
4	4	4	4
5	5	5	5
6	6	6	6
7	7	7	7
8	8	8	8
9	9	9	9
10	10	10	10
11	11	11	11
12	12	12	12
13	13	13	13
14	14	14	14
15	15	15	15
16	16	16	16
17	17	17	17
18	18	18	18
19	19	19	19
20	20	20	20
21	21	21	21
22	22	22	22
23	23	23	23
24	24	24	24

PRELIMINARY PLAT  
 THE VIEW AT WHITE OAK

PHASE 2  
 LOTS 14 thru 51  
 HAMILTON COUNTY, TENNESSEE

DAVID MATHIAS SURVEYING  
 1405 W. BIRCHWOOD DR.  
 MEMPHIS, TN 37504  
 (901) 486-1448

18-3483808