



RESOLUTION NO. 2015-056

**A RESOLUTION APPROVING SUBDIVISION APPLICATION NUMBER 2015-56,
A REQUEST FOR A FINAL PLAT FOR LOTS 1 THRU 83 OF THE
BLACKSTONE CREEK SUBDIVISION**

WHEREAS, David Mathews Surveying submitted an application to the Chattanooga-Hamilton County Regional Planning Commission for the Final Plat for Lots 1 thru 83 of the Blackstone Creek Subdivision; and,

WHEREAS, the Final Plat proposes to subdivide Hamilton County Tax Map 114-096; and,

WHEREAS, on October 12th, 2015 the Chattanooga-Hamilton County Regional Planning Commission, pursuant to the provisions of the Hamilton County Subdivision Regulations conducted a public hearing on said Final Plat; and,

WHEREAS, all materials submitted and related to the Final Plat have been reviewed by utilities, Hamilton County Departmental staff, and other departments and agencies involved in the subdivision review are found to be in compliance with the Hamilton County Subdivision Regulations; and,

WHEREAS, the Planning Commission heard and considered all statements related to the proposed Final Plat; and,

WHEREAS, there was no opposition present for the application for the Final Plat.

NOW THEREFORE, BE IT RESOLVED that the Planning Commission, on October 12th, 2015 does hereby approve the Final Plat for Blackstone Creek Subdivision, Lots 1 thru 83 subject to the following conditions:

- Installation and completion of all infrastructure related improvements as part of this subdivision development.
- Submittal of all required infrastructure "as-builts" to the appropriate departments for review.
- Corrections and modifications as outlined in the RPA Staff Report and Recommendation to the Chattanooga-Hamilton County Regional Planning Commission with the submission of the Final Plat for signatures.

A copy of the approved Final Plat is hereby attached as part of this Resolution.

Approved this 13th Day of October 2015

Respectfully Submitted


John Bridger, Secretary

RECEIVED

SEP 20 2015

Chattanooga Metropolitan County
Regional Planning Agency
1000 Market Street, Room 200
Chattanooga, TN 37402

APPROVED FOR RECORDING
HAMILTON COUNTY GIS DEPT
DATE: 09/16/2015
PROJECT: 15-00000-0000
SUBJECT: 15-00000-0000
APPROVED: [Signature]
PLANNING COMMISSION

Owner's Certification & Dedication
I, the undersigned owner of the property above described, do hereby certify that the use of the same for the purposes herein stated is in accordance with the Comprehensive Zoning Ordinance of Hamilton County, Tennessee.

Engineers Certification
I certify that I have reviewed and designed all new roads, drainage, electric water, and sanitary sewers, as shown on these plans, and that the same comply with all applicable engineering standards.

MAP PREPARER'S CERTIFICATION
I certify that I have prepared the map above described, and that the same is a true and correct representation of the actual conditions on the ground.

PLANNING COMMISSION CERTIFICATION
The Planning Commission of Hamilton County, Tennessee, on this 16th day of September, 2015, has reviewed the plans and specifications for the subdivision of land above described, and has approved the same for recording.

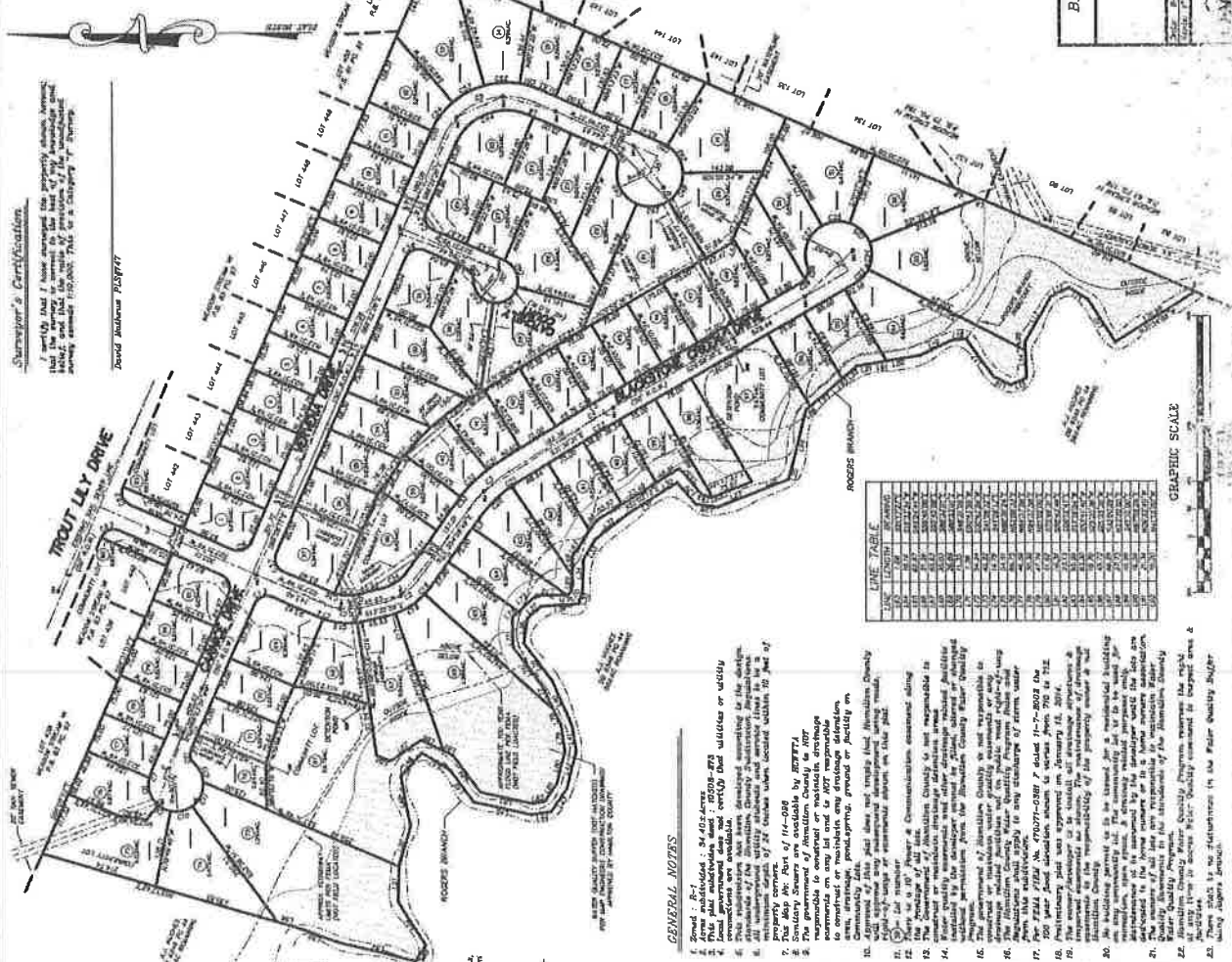
LINE	LENGTH	BEARING
1	121.00	N 89° 15' 00" E
2	121.00	S 89° 15' 00" E
3	121.00	S 00° 00' 00" E
4	121.00	N 00° 00' 00" E
5	121.00	N 89° 15' 00" E
6	121.00	S 89° 15' 00" E
7	121.00	S 00° 00' 00" E
8	121.00	N 00° 00' 00" E
9	121.00	N 89° 15' 00" E
10	121.00	S 89° 15' 00" E
11	121.00	S 00° 00' 00" E
12	121.00	N 00° 00' 00" E
13	121.00	N 89° 15' 00" E
14	121.00	S 89° 15' 00" E
15	121.00	S 00° 00' 00" E
16	121.00	N 00° 00' 00" E
17	121.00	N 89° 15' 00" E
18	121.00	S 89° 15' 00" E
19	121.00	S 00° 00' 00" E
20	121.00	N 00° 00' 00" E
21	121.00	N 89° 15' 00" E
22	121.00	S 89° 15' 00" E
23	121.00	S 00° 00' 00" E
24	121.00	N 00° 00' 00" E
25	121.00	N 89° 15' 00" E
26	121.00	S 89° 15' 00" E
27	121.00	S 00° 00' 00" E
28	121.00	N 00° 00' 00" E
29	121.00	N 89° 15' 00" E
30	121.00	S 89° 15' 00" E
31	121.00	S 00° 00' 00" E
32	121.00	N 00° 00' 00" E
33	121.00	N 89° 15' 00" E
34	121.00	S 89° 15' 00" E
35	121.00	S 00° 00' 00" E
36	121.00	N 00° 00' 00" E
37	121.00	N 89° 15' 00" E
38	121.00	S 89° 15' 00" E
39	121.00	S 00° 00' 00" E
40	121.00	N 00° 00' 00" E
41	121.00	N 89° 15' 00" E
42	121.00	S 89° 15' 00" E
43	121.00	S 00° 00' 00" E
44	121.00	N 00° 00' 00" E
45	121.00	N 89° 15' 00" E
46	121.00	S 89° 15' 00" E
47	121.00	S 00° 00' 00" E
48	121.00	N 00° 00' 00" E
49	121.00	N 89° 15' 00" E
50	121.00	S 89° 15' 00" E
51	121.00	S 00° 00' 00" E
52	121.00	N 00° 00' 00" E
53	121.00	N 89° 15' 00" E
54	121.00	S 89° 15' 00" E
55	121.00	S 00° 00' 00" E
56	121.00	N 00° 00' 00" E
57	121.00	N 89° 15' 00" E
58	121.00	S 89° 15' 00" E
59	121.00	S 00° 00' 00" E
60	121.00	N 00° 00' 00" E
61	121.00	N 89° 15' 00" E
62	121.00	S 89° 15' 00" E
63	121.00	S 00° 00' 00" E
64	121.00	N 00° 00' 00" E
65	121.00	N 89° 15' 00" E
66	121.00	S 89° 15' 00" E
67	121.00	S 00° 00' 00" E
68	121.00	N 00° 00' 00" E
69	121.00	N 89° 15' 00" E
70	121.00	S 89° 15' 00" E
71	121.00	S 00° 00' 00" E
72	121.00	N 00° 00' 00" E
73	121.00	N 89° 15' 00" E
74	121.00	S 89° 15' 00" E
75	121.00	S 00° 00' 00" E
76	121.00	N 00° 00' 00" E
77	121.00	N 89° 15' 00" E
78	121.00	S 89° 15' 00" E
79	121.00	S 00° 00' 00" E
80	121.00	N 00° 00' 00" E
81	121.00	N 89° 15' 00" E
82	121.00	S 89° 15' 00" E
83	121.00	S 00° 00' 00" E
84	121.00	N 00° 00' 00" E
85	121.00	N 89° 15' 00" E
86	121.00	S 89° 15' 00" E
87	121.00	S 00° 00' 00" E
88	121.00	N 00° 00' 00" E
89	121.00	N 89° 15' 00" E
90	121.00	S 89° 15' 00" E
91	121.00	S 00° 00' 00" E
92	121.00	N 00° 00' 00" E
93	121.00	N 89° 15' 00" E
94	121.00	S 89° 15' 00" E
95	121.00	S 00° 00' 00" E
96	121.00	N 00° 00' 00" E
97	121.00	N 89° 15' 00" E
98	121.00	S 89° 15' 00" E
99	121.00	S 00° 00' 00" E
100	121.00	N 00° 00' 00" E

FINAL PLAT

BLACKSTONE CREEK SUBDIVISION

LOTS 1 THRU 83
HAMILTON COUNTY, TENNESSEE

DAVID MATTHEWS SURVEYING
1100 N. BIRCHWOOD DRIVE
CHATTANOOGA, TN 37407
TEL: 423-249-8888
WWW.DMSURVEYING.COM



Owner's Certification & Dedication
I, the undersigned owner of the property above described, do hereby certify that the use of the same for the purposes herein stated is in accordance with the Comprehensive Zoning Ordinance of Hamilton County, Tennessee.

Engineers Certification
I certify that I have reviewed and designed all new roads, drainage, electric water, and sanitary sewers, as shown on these plans, and that the same comply with all applicable engineering standards.

MAP PREPARER'S CERTIFICATION
I certify that I have prepared the map above described, and that the same is a true and correct representation of the actual conditions on the ground.

PLANNING COMMISSION CERTIFICATION
The Planning Commission of Hamilton County, Tennessee, on this 16th day of September, 2015, has reviewed the plans and specifications for the subdivision of land above described, and has approved the same for recording.

GENERAL NOTES
1. Road - R-1
2. Some subdivisions - 24.62 acres
3. Final government plat not shown
4. All lots are to be shown on the plat
5. All lots are to be shown on the plat
6. All lots are to be shown on the plat
7. All lots are to be shown on the plat
8. All lots are to be shown on the plat
9. All lots are to be shown on the plat
10. All lots are to be shown on the plat
11. All lots are to be shown on the plat
12. All lots are to be shown on the plat
13. All lots are to be shown on the plat
14. All lots are to be shown on the plat
15. All lots are to be shown on the plat
16. All lots are to be shown on the plat
17. All lots are to be shown on the plat
18. All lots are to be shown on the plat
19. All lots are to be shown on the plat
20. All lots are to be shown on the plat
21. All lots are to be shown on the plat
22. All lots are to be shown on the plat
23. All lots are to be shown on the plat
24. All lots are to be shown on the plat
25. All lots are to be shown on the plat
26. All lots are to be shown on the plat
27. All lots are to be shown on the plat
28. All lots are to be shown on the plat
29. All lots are to be shown on the plat
30. All lots are to be shown on the plat
31. All lots are to be shown on the plat
32. All lots are to be shown on the plat
33. All lots are to be shown on the plat
34. All lots are to be shown on the plat
35. All lots are to be shown on the plat
36. All lots are to be shown on the plat
37. All lots are to be shown on the plat
38. All lots are to be shown on the plat
39. All lots are to be shown on the plat
40. All lots are to be shown on the plat
41. All lots are to be shown on the plat
42. All lots are to be shown on the plat
43. All lots are to be shown on the plat
44. All lots are to be shown on the plat
45. All lots are to be shown on the plat
46. All lots are to be shown on the plat
47. All lots are to be shown on the plat
48. All lots are to be shown on the plat
49. All lots are to be shown on the plat
50. All lots are to be shown on the plat
51. All lots are to be shown on the plat
52. All lots are to be shown on the plat
53. All lots are to be shown on the plat
54. All lots are to be shown on the plat
55. All lots are to be shown on the plat
56. All lots are to be shown on the plat
57. All lots are to be shown on the plat
58. All lots are to be shown on the plat
59. All lots are to be shown on the plat
60. All lots are to be shown on the plat
61. All lots are to be shown on the plat
62. All lots are to be shown on the plat
63. All lots are to be shown on the plat
64. All lots are to be shown on the plat
65. All lots are to be shown on the plat
66. All lots are to be shown on the plat
67. All lots are to be shown on the plat
68. All lots are to be shown on the plat
69. All lots are to be shown on the plat
70. All lots are to be shown on the plat
71. All lots are to be shown on the plat
72. All lots are to be shown on the plat
73. All lots are to be shown on the plat
74. All lots are to be shown on the plat
75. All lots are to be shown on the plat
76. All lots are to be shown on the plat
77. All lots are to be shown on the plat
78. All lots are to be shown on the plat
79. All lots are to be shown on the plat
80. All lots are to be shown on the plat
81. All lots are to be shown on the plat
82. All lots are to be shown on the plat
83. All lots are to be shown on the plat

LINE	LENGTH	BEARING
1	121.00	N 89° 15' 00" E
2	121.00	S 89° 15' 00" E
3	121.00	S 00° 00' 00" E
4	121.00	N 00° 00' 00" E
5	121.00	N 89° 15' 00" E
6	121.00	S 89° 15' 00" E
7	121.00	S 00° 00' 00" E
8	121.00	N 00° 00' 00" E
9	121.00	N 89° 15' 00" E
10	121.00	S 89° 15' 00" E
11	121.00	S 00° 00' 00" E
12	121.00	N 00° 00' 00" E
13	121.00	N 89° 15' 00" E
14	121.00	S 89° 15' 00" E
15	121.00	S 00° 00' 00" E
16	121.00	N 00° 00' 00" E
17	121.00	N 89° 15' 00" E
18	121.00	S 89° 15' 00" E
19	121.00	S 00° 00' 00" E
20	121.00	N 00° 00' 00" E
21	121.00	N 89° 15' 00" E
22	121.00	S 89° 15' 00" E
23	121.00	S 00° 00' 00" E
24	121.00	N 00° 00' 00" E
25	121.00	N 89° 15' 00" E
26	121.00	S 89° 15' 00" E
27	121.00	S 00° 00' 00" E
28	121.00	N 00° 00' 00" E
29	121.00	N 89° 15' 00" E
30	121.00	S 89° 15' 00" E
31	121.00	S 00° 00' 00" E
32	121.00	N 00° 00' 00" E
33	121.00	N 89° 15' 00" E
34	121.00	S 89° 15' 00" E
35	121.00	S 00° 00' 00" E
36	121.00	N 00° 00' 00" E
37	121.00	N 89° 15' 00" E
38	121.00	S 89° 15' 00" E
39	121.00	S 00° 00' 00" E
40	121.00	N 00° 00' 00" E
41	121.00	N 89° 15' 00" E
42	121.00	S 89° 15' 00" E
43	121.00	S 00° 00' 00" E
44	121.00	N 00° 00' 00" E
45	121.00	N 89° 15' 00" E
46	121.00	S 89° 15' 00" E
47	121.00	S 00° 00' 00" E
48	121.00	N 00° 00' 00" E
49	121.00	N 89° 15' 00" E
50	121.00	S 89° 15' 00" E
51	121.00	S 00° 00' 00" E
52	121.00	N 00° 00' 00" E
53	121.00	N 89° 15' 00" E
54	121.00	S 89° 15' 00" E
55	121.00	S 00° 00' 00" E
56	121.00	N 00° 00' 00" E
57	121.00	N 89° 15' 00" E
58	121.00	S 89° 15' 00" E
59	121.00	S 00° 00' 00" E
60	121.00	N 00° 00' 00" E
61	121.00	N 89° 15' 00" E
62	121.00	S 89° 15' 00" E
63	121.00	S 00° 00' 00" E
64	121.00	N 00° 00' 00" E
65	121.00	N 89° 15' 00" E
66	121.00	S 89° 15' 00" E
67	121.00	S 00° 00' 00" E
68	121.00	N 00° 00' 00" E
69	121.00	N 89° 15' 00" E
70	121.00	S 89° 15' 00" E
71	121.00	S 00° 00' 00" E
72	121.00	N 00° 00' 00" E
73	121.00	N 89° 15' 00" E
74	121.00	S 89° 15' 00" E
75	121.00	S 00° 00' 00" E
76	121.00	N 00° 00' 00" E
77	121.00	N 89° 15' 00" E
78	121.00	S 89° 15' 00" E
79	121.00	S 00° 00' 00" E
80	121.00	N 00° 00' 00" E
81	121.00	N 89° 15' 00" E
82	121.00	S 89° 15' 00" E
83	121.00	S 00° 00' 00" E
84	121.00	N 00° 00' 00" E
85	121.00	N 89° 15' 00" E
86	121.00	S 89° 15' 00" E
87	121.00	S 00° 00' 00" E
88	121.00	N 00° 00' 00" E
89	121.00	N 89° 15' 00" E
90	121.00	S 89° 15' 00" E
91	121.00	S 00° 00' 00" E
92	121.00	N 00° 00' 00" E
93	121.00	N 89° 15' 00" E
94	121.00	S 89° 15' 00" E
95	121.00	S 00° 00' 00" E
96	121.00	N 00° 00' 00" E
97	121.00	N 89° 15' 00" E
98	121.00	S 89° 15' 00" E
99	121.00	S 00° 00' 00" E
100	121.00	N 00° 00' 00" E

GRAPHIC SCALE