



**A RESOLUTION APPROVING AN APPLICATION FOR A VARIANCE FROM THE HAMILTON COUNTY
SUBDIVISION REGULATIONS TO PERMIT A MINIMUM CENTERLINE RADIUS
OF NO LESS THAN 85' FOR PROPOSED "ROAD C" IN THE
HAMPTON MEADOWS PHASE II SUBDIVISION LOTS 1 THRU 148**

WHEREAS, Cornerstone Surveying and MAP Engineers submitted an application to the Chattanooga-Hamilton County Regional Planning Commission for a Variance from the Hamilton County Subdivision Regulations to permit a centerline radius of less than the minimum required 100'; and,

WHEREAS, the Variance request applies to Road C of the Hampton Meadows Subdivision Phase II of Hamilton County Tax Map 114-003; and,

WHEREAS, on July 13th, 2015 the Chattanooga-Hamilton County Regional Planning Commission, pursuant to the provisions of the Hamilton County Subdivision Regulations conducted a public hearing on said Variance,

WHEREAS, all materials submitted and related to the Variance and Final Plat have been reviewed by utilities, Hamilton County Departmental staff, and other departments and agencies involved in the subdivision review are found to be in compliance with the Hamilton County Subdivision Regulations; and,

WHEREAS, the Planning Commission heard and considered all statements related to the proposed Variance;

WHEREAS, there was no opposition present to the application for the Variance.

NOW THEREFORE, BE IT RESOLVED that the Planning Commission, on July 13th, 2015 does hereby approve the Variance for the minimum centerline radius of no less than 85' for proposed "Road C" within the Hampton Meadows Phase II Subdivision Lots 1 thru 148.

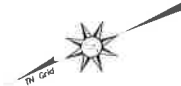
Approve this 14th Day of July 2015

Respectfully Submitted

A handwritten signature in black ink that reads "Bryan Shults".

Bryan Shults, Principal Planner

APPROVED FOR RECORDING
 HAMILTON COUNTY GIS DEPT
 BY: _____
 DATE: _____
 REGIONAL AUTHORITY
 HAMILTON COUNTY REGIONAL
 PLANNING COMMISSION
 DATE: _____
 BY: _____



STATEMENT OF ACCURACY
 I, the undersigned, being a duly licensed Professional Surveyor in the State of Tennessee, do hereby certify that this is a true and correct copy of the original survey as the same appears in my field notes and as the same appears on the accompanying plan and map, and that I am a duly licensed Professional Surveyor in the State of Tennessee, and that I am duly sworn to the truth and accuracy of the foregoing.

PROFESSIONAL SURVEYOR
 STATE OF TENNESSEE
 EXPIRES: _____
 OFFICE: _____
 (423) 236-4592

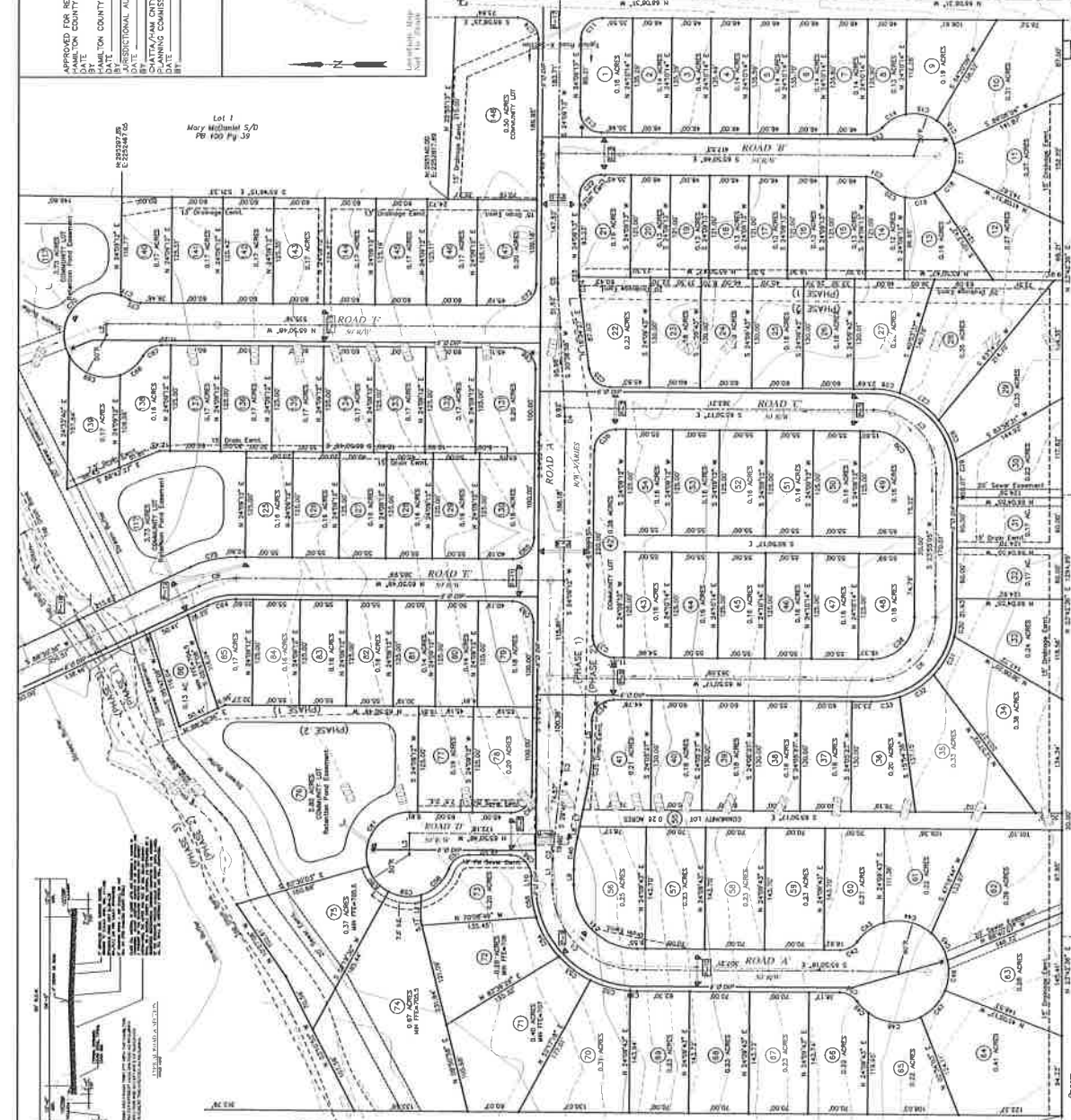
STATEMENT OF PREPARED BY
 I, the undersigned, being a duly licensed Professional Engineer in the State of Tennessee, do hereby certify that this is a true and correct copy of the original engineering plan and map, and that I am a duly licensed Professional Engineer in the State of Tennessee, and that I am duly sworn to the truth and accuracy of the foregoing.

PROFESSIONAL ENGINEER
 STATE OF TENNESSEE
 EXPIRES: _____
 OFFICE: _____
 (423) 236-4592

PROVIDENCE ROAD 50' R/W

(Preliminary Plat)
 Hampton Meadows II

A PLANNED UNIT DEVELOPMENT
 (LOTS 1-148)
 Located in the Second Civil District of
 Hamilton County, Tennessee



Notes
 D.B. 8073 Pg. 885

08 2923 Pg. 944
 CORNERSTONE
 SURVEYING, LLC
 7023 SNOW HILL ROAD
 COOLESBORO, TN 37063
 (423) 236-4592

08 3378 Pg. 750
 I hereby certify that this is a true and correct copy of the original survey as the same appears in my field notes and as the same appears on the accompanying plan and map, and that I am a duly licensed Professional Surveyor in the State of Tennessee, and that I am duly sworn to the truth and accuracy of the foregoing.

08 4627 Pg. 848
 I hereby certify that this is a true and correct copy of the original survey as the same appears in my field notes and as the same appears on the accompanying plan and map, and that I am a duly licensed Professional Surveyor in the State of Tennessee, and that I am duly sworn to the truth and accuracy of the foregoing.

08 5378 Pg. 750
 I hereby certify that this is a true and correct copy of the original survey as the same appears in my field notes and as the same appears on the accompanying plan and map, and that I am a duly licensed Professional Surveyor in the State of Tennessee, and that I am duly sworn to the truth and accuracy of the foregoing.



Scale 1"=60'
 0' 100' 200'
 0' 100' 200'