



**A RESOLUTION APPROVING WITH CONDITION SUBDIVISION APPLICATION
NUMBER 2015-29 A PRELIMINARY PLAT-RESIDENCE OF CAMBRIDGE SQUARE
A PLANNED UNIT DEVELOPMENT, LOTS 1 THRU 104**

WHEREAS, David Mathews Surveying and MAP Engineers submitted an application to the Chattanooga-Hamilton County Regional Planning Commission for a Preliminary Plat for Residence of Cambridge Square PUD, Lots 1 thru 104; and,

WHEREAS, the Preliminary Plat proposes to subdivide Hamilton County Tax Map 131A-A-026; and,

WHEREAS, on July 13th, 2015 the Chattanooga-Hamilton County Regional Planning Commission, pursuant to the provisions of the Hamilton County Subdivision Regulations conducted a public hearing on said Preliminary Plat,

WHEREAS, all materials submitted and related to the Preliminary Plat have been reviewed by utilities, Hamilton County Departmental staff, and other departments and agencies involved in the subdivision review are found to be in compliance with the Hamilton County Subdivision Regulations; and,

WHEREAS, the Planning Commission heard and considered all statements related to the proposed Preliminary Plat;

WHEREAS, there was no opposition present for the application for the Preliminary Plat.

NOW THEREFORE, BE IT RESOLVED that the Planning Commission, on July 13th, 2015 does hereby approve the Preliminary Plat of Residence of Cambridge Square PUD, Lots 1 thru 104 **subject to submittal and approval of public sanitary sewer lines.**

Please correct any required additional corrections, modifications, and notes as outlined in the RPA Staff Report and Recommendation to the Chattanooga-Hamilton County Regional Planning Commission with the submission of the Final Plat for review and consideration.

A copy of the approved Preliminary Plat is hereby attached as part of this Resolution.

Approved this 14th Day of July 2015

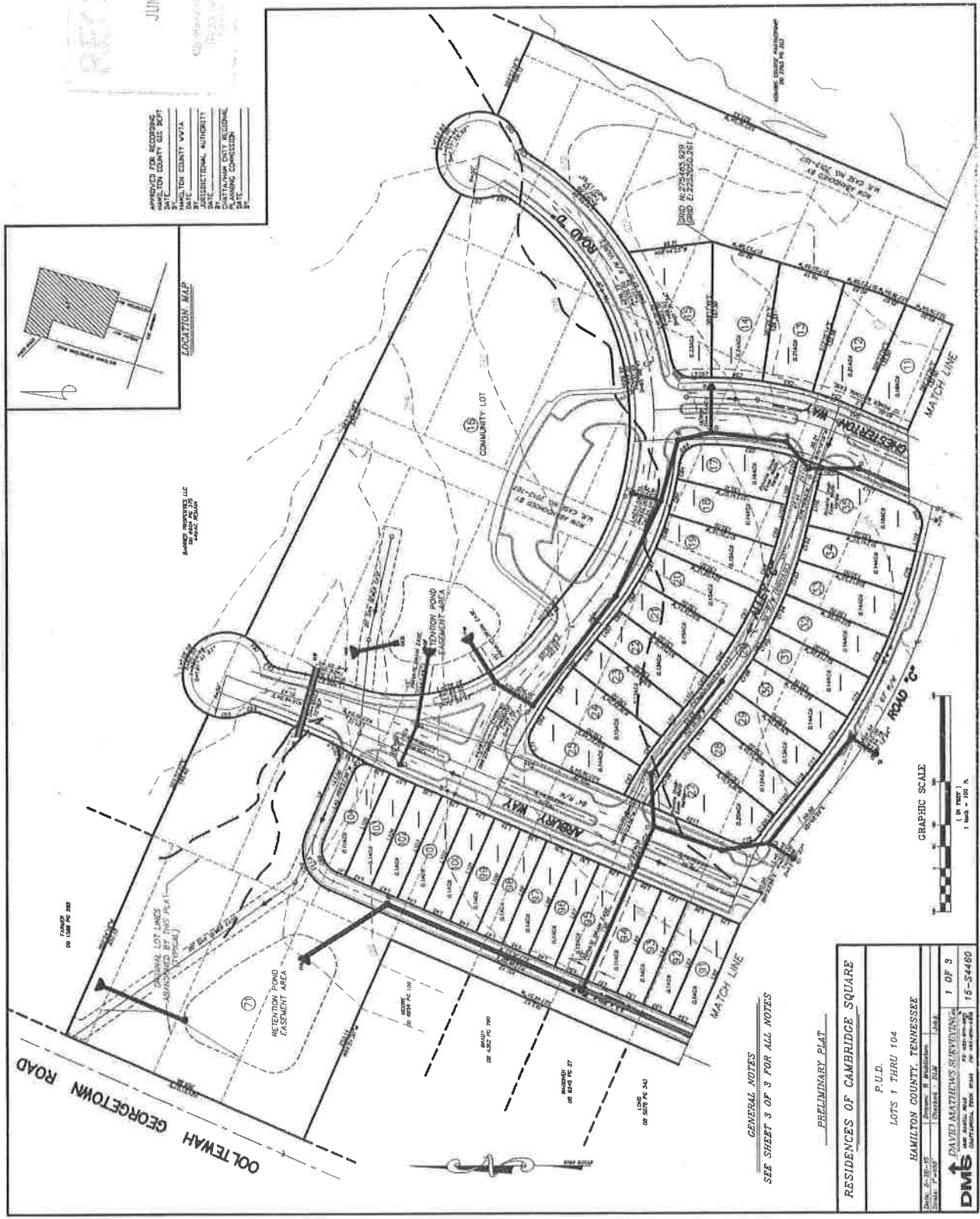
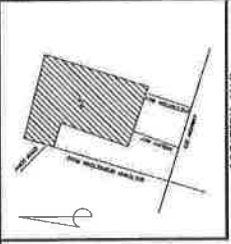
Respectfully Submitted

A handwritten signature in black ink that reads 'Bryan Shults'.

Bryan Shults, Principal Planner

RECEIVED
 JUN 22 2015
 COUNTY ENGINEER
 HAMILTON COUNTY, TENNESSEE

APPROVED FOR RECORDING
 HAMILTON COUNTY GIS DEPT
 DATE: _____
 HAMILTON COUNTY VP/EA
 DATE: _____
 JURISDICTIONAL AUTHORITY
 DATE: _____
 CONTRACTOR ONLY RECORDING
 PLANNING COMMISSION
 DATE: _____



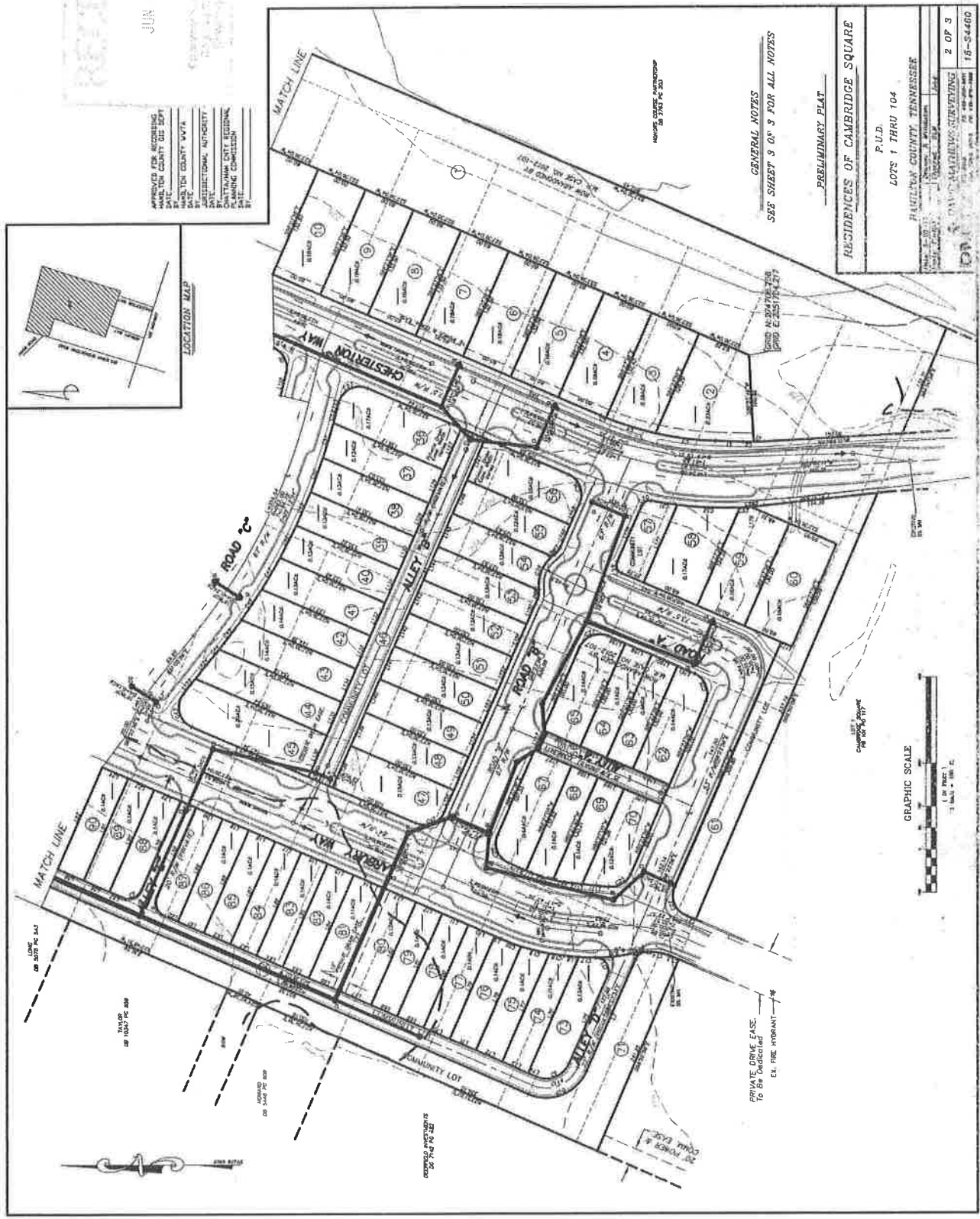
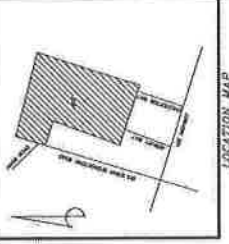
GENERAL NOTES
 SEE SHEET 3 OF 3 FOR ALL NOTES

PRELIMINARY PLAN

RESIDENCES OF CAMBRIDGE SQUARE	
P.U.D.	
LOTS 1 THRU 104	
HAMILTON COUNTY, TENNESSEE	
DATE: 06-10-15	BY: [Signature]
CHECKED: [Signature]	DATE: [Signature]
1 OF 3	
DMS DAVID MATTHEWS SURVEYING	
15-S44469	

RECEIVED
 JUN 22 2015
 Planning & Zoning Commission
 100 N. 3rd St., 3rd Floor
 Nashville, TN 37203

APPROVED FOR SUBMISSION
 HAMILTON COUNTY GIS DEPT
 DATE: 6/15/15
 HAMILTON COUNTY AVTA
 BY: [Signature]
 ARCHITECTURAL AUTHORITY
 BY: [Signature]
 PLANNING & ZONING COMMISSION
 DATE: 6/15/15



GENERAL NOTES
 SEE SHEET 9 OF 9 FOR ALL NOTES

PRELIMINARY PLAN

RESIDENCES OF CAMBRIDGE SQUARE

P.U.D.
 LOTS 1 THRU 104

HAMILTON COUNTY, TENNESSEE

DATE: 6/15/15
 DRAWN BY: [Signature]
 CHECKED BY: [Signature]
 PROJECT NO.: 15-54460

2 OF 9
 15-54460

GRAPHIC SCALE



JUN 20 2015

APPROVED FOR RECORDING
HAMILTON COUNTY DISTRICT
CLERK
HAMILTON COUNTY WATER
DEPARTMENT
HAMILTON COUNTY PUBLIC
UTILITIES DEPARTMENT
HAMILTON COUNTY REGIONAL
PLANNING COMMISSION

Surveyor's Certification

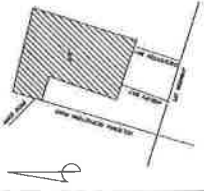
I certify that I have surveyed the property shown hereon, and that the original bearings and distances of the boundary lines are correct, and that the same are shown on the accompanying plat, and that I have also shown thereon the locations of all buildings and other improvements thereon, and that the same are shown on the accompanying plat, and that the same are shown on the accompanying plat, and that the same are shown on the accompanying plat.

David Matheson PL23747

Owner's Certification

I, the undersigned, as the owner of the property shown hereon, do hereby certify that the same are correct, and that the same are shown on the accompanying plat, and that the same are shown on the accompanying plat, and that the same are shown on the accompanying plat, and that the same are shown on the accompanying plat.

Owner Properties LLC
201 West Main St Suite 205
Canton, TN 37024
(615) 339-3444



LOCATION MAP

LINE TABLE

LINE	LENGTH	BEARING
1	1.18	288° 23' 52" W
2	1.18	330° 06' 34" W
3	1.18	159° 06' 34" E
4	1.18	218° 51' 52" E
5	1.18	300° 51' 52" E
6	1.18	159° 06' 34" E
7	1.18	218° 51' 52" E
8	1.18	300° 51' 52" E
9	1.18	159° 06' 34" E
10	1.18	218° 51' 52" E
11	1.18	300° 51' 52" E
12	1.18	159° 06' 34" E
13	1.18	218° 51' 52" E
14	1.18	300° 51' 52" E
15	1.18	159° 06' 34" E
16	1.18	218° 51' 52" E
17	1.18	300° 51' 52" E
18	1.18	159° 06' 34" E
19	1.18	218° 51' 52" E
20	1.18	300° 51' 52" E

CURVE TABLE

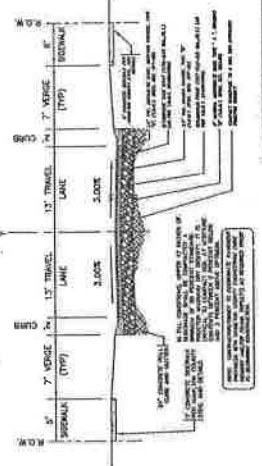
CHORD	ARC	CURVE AREA
0.0	0.0	0.000000
0.1	0.1	0.005000
0.2	0.2	0.010000
0.3	0.3	0.015000
0.4	0.4	0.020000
0.5	0.5	0.025000
0.6	0.6	0.030000
0.7	0.7	0.035000
0.8	0.8	0.040000
0.9	0.9	0.045000
1.0	1.0	0.050000

SECTION TABLE

SECTION	LENGTH	BEARING	AREA
1	1.18	288° 23' 52" W	0.0000
2	1.18	330° 06' 34" W	0.0000
3	1.18	159° 06' 34" E	0.0000
4	1.18	218° 51' 52" E	0.0000
5	1.18	300° 51' 52" E	0.0000
6	1.18	159° 06' 34" E	0.0000
7	1.18	218° 51' 52" E	0.0000
8	1.18	300° 51' 52" E	0.0000
9	1.18	159° 06' 34" E	0.0000
10	1.18	218° 51' 52" E	0.0000
11	1.18	300° 51' 52" E	0.0000
12	1.18	159° 06' 34" E	0.0000
13	1.18	218° 51' 52" E	0.0000
14	1.18	300° 51' 52" E	0.0000
15	1.18	159° 06' 34" E	0.0000
16	1.18	218° 51' 52" E	0.0000
17	1.18	300° 51' 52" E	0.0000
18	1.18	159° 06' 34" E	0.0000
19	1.18	218° 51' 52" E	0.0000
20	1.18	300° 51' 52" E	0.0000

GENERAL NOTES

1. Survey 1-2-11 P.L.D. 8833-11-11
2. This plat and subdivision map were prepared for the purpose of surveying the lots shown hereon.
3. All measurements were taken with a surveying instrument.
4. The survey was conducted in accordance with the standards of the International Association of Professional Surveyors.
5. The plat and subdivision map were prepared for the purpose of surveying the lots shown hereon.
6. All measurements were taken with a surveying instrument.
7. The survey was conducted in accordance with the standards of the International Association of Professional Surveyors.
8. The plat and subdivision map were prepared for the purpose of surveying the lots shown hereon.
9. All measurements were taken with a surveying instrument.
10. The survey was conducted in accordance with the standards of the International Association of Professional Surveyors.
11. The plat and subdivision map were prepared for the purpose of surveying the lots shown hereon.
12. All measurements were taken with a surveying instrument.
13. The survey was conducted in accordance with the standards of the International Association of Professional Surveyors.
14. The plat and subdivision map were prepared for the purpose of surveying the lots shown hereon.
15. All measurements were taken with a surveying instrument.
16. The survey was conducted in accordance with the standards of the International Association of Professional Surveyors.



SECTION ROAD 3" SECTION 3" D

PRELIMINARY PLAT
RESIDENCES OF CAMBRIDGE SQUARE
P.L.D.
LOTS 1 THRU 104
HAMILTON COUNTY, TENNESSEE

DAVID MATHESON SURVEYING
1520 JEFFERSON ST. SW
CANTON, TN 37024
(615) 339-3444

DATE: 6/20/15
SCALE: AS SHOWN
JOB NO: 15-34460

LINE	LENGTH	BEARING	AREA
1	1.18	288° 23' 52" W	0.0000
2	1.18	330° 06' 34" W	0.0000
3	1.18	159° 06' 34" E	0.0000
4	1.18	218° 51' 52" E	0.0000
5	1.18	300° 51' 52" E	0.0000
6	1.18	159° 06' 34" E	0.0000
7	1.18	218° 51' 52" E	0.0000
8	1.18	300° 51' 52" E	0.0000
9	1.18	159° 06' 34" E	0.0000
10	1.18	218° 51' 52" E	0.0000
11	1.18	300° 51' 52" E	0.0000
12	1.18	159° 06' 34" E	0.0000
13	1.18	218° 51' 52" E	0.0000
14	1.18	300° 51' 52" E	0.0000
15	1.18	159° 06' 34" E	0.0000
16	1.18	218° 51' 52" E	0.0000
17	1.18	300° 51' 52" E	0.0000
18	1.18	159° 06' 34" E	0.0000
19	1.18	218° 51' 52" E	0.0000
20	1.18	300° 51' 52" E	0.0000

LINE	LENGTH	BEARING	AREA
1	1.18	288° 23' 52" W	0.0000
2	1.18	330° 06' 34" W	0.0000
3	1.18	159° 06' 34" E	0.0000
4	1.18	218° 51' 52" E	0.0000
5	1.18	300° 51' 52" E	0.0000
6	1.18	159° 06' 34" E	0.0000
7	1.18	218° 51' 52" E	0.0000
8	1.18	300° 51' 52" E	0.0000
9	1.18	159° 06' 34" E	0.0000
10	1.18	218° 51' 52" E	0.0000
11	1.18	300° 51' 52" E	0.0000
12	1.18	159° 06' 34" E	0.0000
13	1.18	218° 51' 52" E	0.0000
14	1.18	300° 51' 52" E	0.0000
15	1.18	159° 06' 34" E	0.0000
16	1.18	218° 51' 52" E	0.0000
17	1.18	300° 51' 52" E	0.0000
18	1.18	159° 06' 34" E	0.0000
19	1.18	218° 51' 52" E	0.0000
20	1.18	300° 51' 52" E	0.0000

LINE	LENGTH	BEARING	AREA
1	1.18	288° 23' 52" W	0.0000
2	1.18	330° 06' 34" W	0.0000
3	1.18	159° 06' 34" E	0.0000
4	1.18	218° 51' 52" E	0.0000
5	1.18	300° 51' 52" E	0.0000
6	1.18	159° 06' 34" E	0.0000
7	1.18	218° 51' 52" E	0.0000
8	1.18	300° 51' 52" E	0.0000
9	1.18	159° 06' 34" E	0.0000
10	1.18	218° 51' 52" E	0.0000
11	1.18	300° 51' 52" E	0.0000
12	1.18	159° 06' 34" E	0.0000
13	1.18	218° 51' 52" E	0.0000
14	1.18	300° 51' 52" E	0.0000
15	1.18	159° 06' 34" E	0.0000
16	1.18	218° 51' 52" E	0.0000
17	1.18	300° 51' 52" E	0.0000
18	1.18	159° 06' 34" E	0.0000
19	1.18	218° 51' 52" E	0.0000
20	1.18	300° 51' 52" E	0.0000