



RESOLUTION NO. 2015-074

**A RESOLUTION APPROVING SUBDIVISION APPLICATION NUMBER 2015-074,
A REQUEST FOR A PRELIMINARY PLAT FOR LOTS 1 THRU 23 OF THE
TURNBERRY FARMS SUBDIVISION**

WHEREAS, Copp Engineering submitted an application to the Chattanooga-Hamilton County Regional Planning Commission for the Preliminary Plat for Lots 1 thru 23 of the Turnberry Farms Subdivision; and,

WHEREAS, the Preliminary Plat proposes to subdivide Hamilton County Tax Map 074P-A-036; and,

WHEREAS, on December 14th, 2015 the Chattanooga-Hamilton County Regional Planning Commission, pursuant to the provisions of the Hamilton County Subdivision Regulations conducted a public hearing on said Preliminary; and,

WHEREAS, all materials submitted and related to the Preliminary Plat have been reviewed by utilities, Hamilton County Departmental staff, and other departments and agencies involved in the subdivision review are found to be in compliance with the Hamilton County Subdivision Regulations; and,

WHEREAS, the Planning Commission heard and considered all statements related to the proposed Preliminary Plat; and,

WHEREAS, there was no opposition present for the application for the Preliminary Plat.

NOW THEREFORE, BE IT RESOLVED that the Planning Commission, on December 14th, 2015 does hereby approve the Preliminary Plat for Turnberry Farms Subdivision, Lots 1 thru 23 subject to the following conditions:

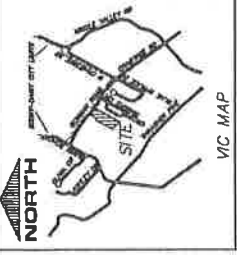
- Hamilton County Groundwater Protection approval of septic tank use for these proposed lots.

A copy of the approved Preliminary Plat is hereby attached as part of this Resolution.

Approved this 15th Day of December 2015

Respectfully Submitted


John Bridger, Secretary



As per City Ord. 188, the name of the street shall be established and recorded with the plat of subdivision and approved by the Mayor and City Council. The name shall be recorded in the City Clerk's office and shall be recorded on the primary plat.

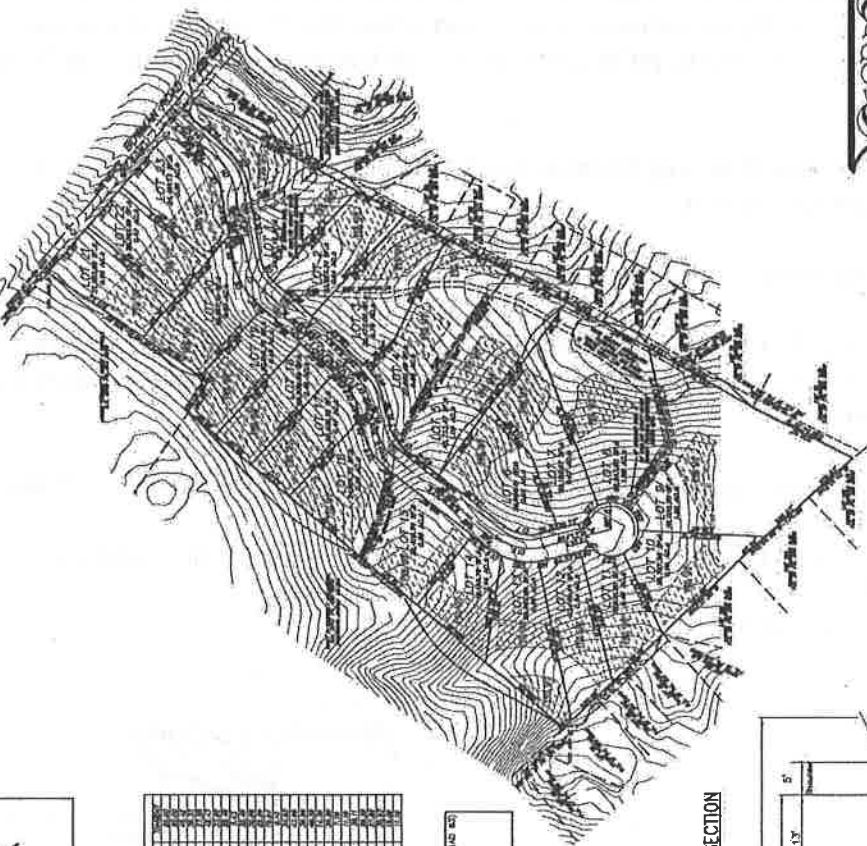
SEAN P. JOHNSON, MAYOR
JAMES J. JONES, CITY CLERK
KIMBERLY POLK, CITY CLERK

FOR RECORDED

James A. Cline, Sr.
1101 International Blvd.
P.O. Box 100
Cookeville, TN 38506
(615) 473-2700

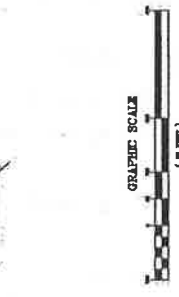
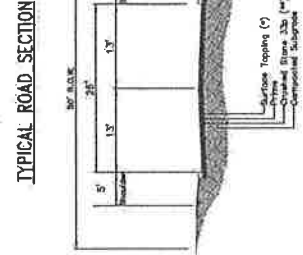
FOR RECORDED

James A. Cline, Sr.
1101 International Blvd.
P.O. Box 100
Cookeville, TN 38506
(615) 473-2700



Lot #	Area (Acres)	Area (Sq. Ft.)	Approx. Acreage
1	0.00	0.00	0.00
2	0.00	0.00	0.00
3	0.00	0.00	0.00
4	0.00	0.00	0.00
5	0.00	0.00	0.00
6	0.00	0.00	0.00
7	0.00	0.00	0.00
8	0.00	0.00	0.00
9	0.00	0.00	0.00
10	0.00	0.00	0.00
11	0.00	0.00	0.00
12	0.00	0.00	0.00
13	0.00	0.00	0.00
14	0.00	0.00	0.00
15	0.00	0.00	0.00
16	0.00	0.00	0.00
17	0.00	0.00	0.00
18	0.00	0.00	0.00
19	0.00	0.00	0.00
20	0.00	0.00	0.00
21	0.00	0.00	0.00
22	0.00	0.00	0.00
23	0.00	0.00	0.00
24	0.00	0.00	0.00
25	0.00	0.00	0.00
26	0.00	0.00	0.00
27	0.00	0.00	0.00
28	0.00	0.00	0.00
29	0.00	0.00	0.00
30	0.00	0.00	0.00
31	0.00	0.00	0.00
32	0.00	0.00	0.00
33	0.00	0.00	0.00
34	0.00	0.00	0.00
35	0.00	0.00	0.00
36	0.00	0.00	0.00
37	0.00	0.00	0.00
38	0.00	0.00	0.00
39	0.00	0.00	0.00
40	0.00	0.00	0.00
41	0.00	0.00	0.00
42	0.00	0.00	0.00
43	0.00	0.00	0.00
44	0.00	0.00	0.00
45	0.00	0.00	0.00
46	0.00	0.00	0.00
47	0.00	0.00	0.00
48	0.00	0.00	0.00
49	0.00	0.00	0.00
50	0.00	0.00	0.00
51	0.00	0.00	0.00
52	0.00	0.00	0.00
53	0.00	0.00	0.00
54	0.00	0.00	0.00
55	0.00	0.00	0.00
56	0.00	0.00	0.00
57	0.00	0.00	0.00
58	0.00	0.00	0.00
59	0.00	0.00	0.00
60	0.00	0.00	0.00
61	0.00	0.00	0.00
62	0.00	0.00	0.00
63	0.00	0.00	0.00
64	0.00	0.00	0.00
65	0.00	0.00	0.00
66	0.00	0.00	0.00
67	0.00	0.00	0.00
68	0.00	0.00	0.00
69	0.00	0.00	0.00
70	0.00	0.00	0.00
71	0.00	0.00	0.00
72	0.00	0.00	0.00
73	0.00	0.00	0.00
74	0.00	0.00	0.00
75	0.00	0.00	0.00
76	0.00	0.00	0.00
77	0.00	0.00	0.00
78	0.00	0.00	0.00
79	0.00	0.00	0.00
80	0.00	0.00	0.00
81	0.00	0.00	0.00
82	0.00	0.00	0.00
83	0.00	0.00	0.00
84	0.00	0.00	0.00
85	0.00	0.00	0.00
86	0.00	0.00	0.00
87	0.00	0.00	0.00
88	0.00	0.00	0.00
89	0.00	0.00	0.00
90	0.00	0.00	0.00
91	0.00	0.00	0.00
92	0.00	0.00	0.00
93	0.00	0.00	0.00
94	0.00	0.00	0.00
95	0.00	0.00	0.00
96	0.00	0.00	0.00
97	0.00	0.00	0.00
98	0.00	0.00	0.00
99	0.00	0.00	0.00
100	0.00	0.00	0.00

TENNESSEE STATE PLANS AND COORDINATES (INAD 43)
NORTHING = 312874.40
EASTING = 331211.14
ELEVATION = 253.708518



APPROVED FOR RECORDING
HAMILTON COUNTY CLERK
DATE: 11/19/2015
BY: [Signature]

GENERAL NOTES:

1. Show 1/4" = 1'
2. All plat boundaries shall meet 1977 Plat 450 PDS.
City and County shall be responsible for the maps standards of the location.
3. All lots shall be shown in accordance with the map.
4. All lots shall be shown in accordance with the map.
5. 1500' - 1500' - 1500' - 1500' - 1500'
6. 1500' - 1500' - 1500' - 1500' - 1500'
7. The plat of 1977 Plat 450 PDS.
8. The plat of 1977 Plat 450 PDS.
9. The plat of 1977 Plat 450 PDS.
10. The plat of 1977 Plat 450 PDS.
11. The plat of 1977 Plat 450 PDS.
12. The plat of 1977 Plat 450 PDS.
13. The plat of 1977 Plat 450 PDS.
14. The plat of 1977 Plat 450 PDS.
15. The plat of 1977 Plat 450 PDS.
16. The plat of 1977 Plat 450 PDS.
17. The plat of 1977 Plat 450 PDS.
18. The plat of 1977 Plat 450 PDS.
19. The plat of 1977 Plat 450 PDS.
20. The plat of 1977 Plat 450 PDS.
21. The plat of 1977 Plat 450 PDS.
22. The plat of 1977 Plat 450 PDS.
23. The plat of 1977 Plat 450 PDS.
24. The plat of 1977 Plat 450 PDS.
25. The plat of 1977 Plat 450 PDS.
26. The plat of 1977 Plat 450 PDS.
27. The plat of 1977 Plat 450 PDS.
28. The plat of 1977 Plat 450 PDS.
29. The plat of 1977 Plat 450 PDS.
30. The plat of 1977 Plat 450 PDS.
31. The plat of 1977 Plat 450 PDS.
32. The plat of 1977 Plat 450 PDS.
33. The plat of 1977 Plat 450 PDS.
34. The plat of 1977 Plat 450 PDS.
35. The plat of 1977 Plat 450 PDS.
36. The plat of 1977 Plat 450 PDS.
37. The plat of 1977 Plat 450 PDS.
38. The plat of 1977 Plat 450 PDS.
39. The plat of 1977 Plat 450 PDS.
40. The plat of 1977 Plat 450 PDS.
41. The plat of 1977 Plat 450 PDS.
42. The plat of 1977 Plat 450 PDS.
43. The plat of 1977 Plat 450 PDS.
44. The plat of 1977 Plat 450 PDS.
45. The plat of 1977 Plat 450 PDS.
46. The plat of 1977 Plat 450 PDS.
47. The plat of 1977 Plat 450 PDS.
48. The plat of 1977 Plat 450 PDS.
49. The plat of 1977 Plat 450 PDS.
50. The plat of 1977 Plat 450 PDS.
51. The plat of 1977 Plat 450 PDS.
52. The plat of 1977 Plat 450 PDS.
53. The plat of 1977 Plat 450 PDS.
54. The plat of 1977 Plat 450 PDS.
55. The plat of 1977 Plat 450 PDS.
56. The plat of 1977 Plat 450 PDS.
57. The plat of 1977 Plat 450 PDS.
58. The plat of 1977 Plat 450 PDS.
59. The plat of 1977 Plat 450 PDS.
60. The plat of 1977 Plat 450 PDS.
61. The plat of 1977 Plat 450 PDS.
62. The plat of 1977 Plat 450 PDS.
63. The plat of 1977 Plat 450 PDS.
64. The plat of 1977 Plat 450 PDS.
65. The plat of 1977 Plat 450 PDS.
66. The plat of 1977 Plat 450 PDS.
67. The plat of 1977 Plat 450 PDS.
68. The plat of 1977 Plat 450 PDS.
69. The plat of 1977 Plat 450 PDS.
70. The plat of 1977 Plat 450 PDS.
71. The plat of 1977 Plat 450 PDS.
72. The plat of 1977 Plat 450 PDS.
73. The plat of 1977 Plat 450 PDS.
74. The plat of 1977 Plat 450 PDS.
75. The plat of 1977 Plat 450 PDS.
76. The plat of 1977 Plat 450 PDS.
77. The plat of 1977 Plat 450 PDS.
78. The plat of 1977 Plat 450 PDS.
79. The plat of 1977 Plat 450 PDS.
80. The plat of 1977 Plat 450 PDS.
81. The plat of 1977 Plat 450 PDS.
82. The plat of 1977 Plat 450 PDS.
83. The plat of 1977 Plat 450 PDS.
84. The plat of 1977 Plat 450 PDS.
85. The plat of 1977 Plat 450 PDS.
86. The plat of 1977 Plat 450 PDS.
87. The plat of 1977 Plat 450 PDS.
88. The plat of 1977 Plat 450 PDS.
89. The plat of 1977 Plat 450 PDS.
90. The plat of 1977 Plat 450 PDS.
91. The plat of 1977 Plat 450 PDS.
92. The plat of 1977 Plat 450 PDS.
93. The plat of 1977 Plat 450 PDS.
94. The plat of 1977 Plat 450 PDS.
95. The plat of 1977 Plat 450 PDS.
96. The plat of 1977 Plat 450 PDS.
97. The plat of 1977 Plat 450 PDS.
98. The plat of 1977 Plat 450 PDS.
99. The plat of 1977 Plat 450 PDS.
100. The plat of 1977 Plat 450 PDS.

PRELIMINARY PLAT

TURNBERRY FARMS S/D

LOTS 1-23

HAMILTON COUNTY TENNESSEE

Case: 11/19/15

Plat: 1

City: Cookeville

County: Hamilton

Volume: 150

Page: 1

Date: 11/19/2015

Time: 10:23:14 AM

City Clerk: Kimberly Polk

City Clerk: James J. Jones

City Clerk: Sean P. Johnson

RECEIVED

NOV 19 2015

Hamilton County
County Administration
County Administration