



RESOLUTION NO. 2015-071

**A RESOLUTION APPROVING SUBDIVISION APPLICATION NUMBER 2015-071,
A REQUEST FOR THE URBAN INFILL LOT COMPATIBILITY OPTION FOR A RESUBDIVISION OF LOTS
21, 22, AND 23 OF SLEEPY HOLLOW SUBDIVISION**

WHEREAS, Chattanooga Surveying submitted an application to the Chattanooga-Hamilton County Regional Planning Commission for the Urban Infill Lot Compatibility Option for a Resubdivision of Lots 21, 22, and 23 of the Sleepy Hollow Subdivision; and,

WHEREAS, the Urban Infill Lot Compatibility Option proposes to subdivide Hamilton County Tax Map 1271-A-023; and,

WHEREAS, on December 14th, 2015 the Chattanooga-Hamilton County Regional Planning Commission, pursuant to the provisions of the City of Chattanooga Subdivision Regulations conducted a public hearing on said Urban Infill Lot Compatibility Option; and,

WHEREAS, all materials submitted and related to the Urban Infill Lot Compatibility Option request have been reviewed by utilities, City of Chattanooga Departmental staff, and other departments and agencies involved in the subdivision review; and,

WHEREAS, the Planning Commission heard and considered all statements related to the proposed Urban Infill Lot Compatibility Option request; and,

WHEREAS, there was no opposition present for the application for the Urban Infill Lot Compatibility Option request.

NOW THEREFORE, BE IT RESOLVED that the Planning Commission, on December 14th, 2015 does hereby approve the Urban Infill Lot Compatibility Option request for Sleepy Hollow Subdivision, a Resubdivision of Lots 21, 22, and 23.

A copy of the proposed subdivision plat is hereby attached as part of this Resolution.

Approved this 15th Day of December 2015

Respectfully Submitted



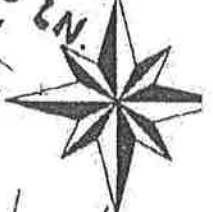
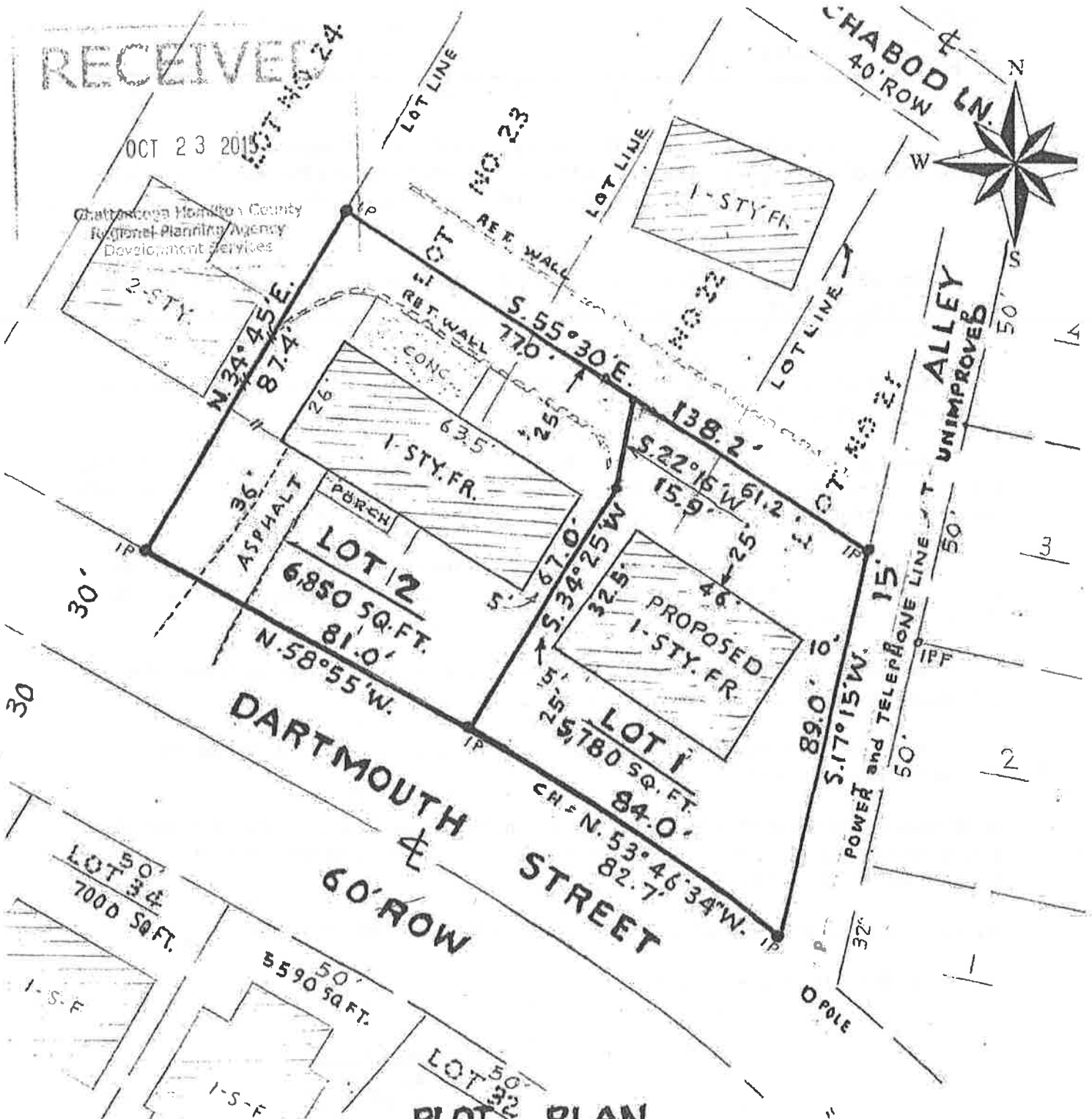
John Bridger, Secretary

RECEIVED

OCT 23 2015

LOT NO 24

Chattanooga Hamilton County
Regional Planning Agency
Development Services



PLOT PLAN

State of TENNESSEE
 County of HAMILTON
 BEING: RESUB. PART OF LOTS 21, 22 and 23, SLEEPY HOLLOW SUBD. INTO 2 LOTS

Date 10-20-15
 Scale 1" equals 30 feet

PB 11 PG. 14

TYPE I
 No. 0915-125



[Signature]
CHATTANOOGA SURVEYING CO.
 3810 LAKE VISTA DR.
 CHATTANOOGA, TENNESSEE 37416
 (423) 249-1111